



CHAMPIONS:
1997, 2009, 2010

SCHEDULE/RESULTS

2017-18 Schedule

NOVEMBER

11	at Minnesota	L, 73-107
14	at Monmouth	W, 75-57
17	vs. Villanova (PPL Center)	L, 42-62
20	at Cornell	W, 62-57
22	MANSFIELD	W, 77-47
25	FAIRFIELD	W, 56-53
26	LA SALLE	L, 61-69
29	MOUNT ST. MARY'S	W, 75-71

DECEMBER

3	at Sacred Heart	L, 55-65
6	NJIT (EDUCATION DAY)	W, 64-50
10	at LIU Brooklyn (Barclays Center)	1:00 p.m.
29	LAFAYETTE*	4:00 p.m.

JANUARY

2	NAVY*	6:00 p.m.
5	at Holy Cross*	6:00 p.m.
8	BOSTON UNIVERSITY*	6:00 p.m.
11	BUCKNELL*	6:00 p.m.
14	at American*	3:00 p.m.
17	at Colgate*	7:00 p.m.
20	ARMY WEST POINT*	2:00 p.m.
24	at Loyola*	7:00 p.m.
27	at Navy*	7:00 p.m.

FEBRUARY

3	at Boston University*	2:00 p.m.
7	at Bucknell*	6:00 p.m.
10	AMERICAN* (PLAY4KAY)	4:00 p.m.
14	COLGATE*	6:00 p.m.
17	at Army West Point*	1:00 p.m.
21	LOYOLA*	6:00 p.m.
24	at Lafayette*	2:00 p.m.
28	HOLY CROSS*	6:00 p.m.

MARCH

3	<i>Patriot League First Round</i>	TBA
5	<i>Patriot League Quarterfinal</i>	TBA
8	<i>Patriot League Semifinal</i>	TBA
11	<i>Patriot League Championship</i>	TBA

All times Eastern and subject to change
Home games in **BOLD CAPS**
Neutral site games in *Italics*
*-Patriot League Game
(&) Christmas City Classic at Lehigh

MEDIA INFORMATION

Contact: Tim Geer
Office: (610) 758-5043
Cell: (203) 906-8899
E-mail: tjg215@lehigh.edu
Press Row: (610) 758-4903/4933

Broadcast Info:

TV: N/A
Video: NEC Front Row
Radio: N/A
Internet Audio: Lehighsports.com/watch

Lehigh Online:

Website - Lehighsports.com
Facebook - Facebook.com/LehighWBB
Twitter - @LehighWBB
Instagram - @LehighWBB

LEHIGH

WOMEN'S BASKETBALL

GAME 11: LIU BROOKLYN

LEHIGH MOUNTAIN HAWKS (6-4)

AT

LIU BROOKLYN BLACKBIRDS (3-5)

BROOKLYN, N.Y. • DECEMBER 10, 2017 • 1 P.M.

BARCLAYS CENTER (18,103)



SETTING THE SCENE

The Lehigh women's basketball team will close out non-league play this Sunday with a matchup against LIU Brooklyn at the Barclays Center. It will mark the first matchup between the two schools in just over 10 years. Lehigh is coming off a 64-50 win over NJIT in front of over 4,000 fans at Education Day on Wednesday, while LIU saw an impressive fourth quarter rally fall short in an overtime defeat at George Mason on Thursday.

All told, 10 different Mountain Hawks scored in the NJIT win and the team registered six blocks, its most in a single game since Nov. 2013. Senior Quinci Mann led all scorers with 15 points on 6-of-11 shooting and sophomore Gena Grundhoffer scored in double figures for the third straight contest with 12 points and six rebounds. Freshman Mariah Sexe collected seven points and five rebounds and senior Mae Williams tied her career-high with a team-leading seven rebounds.

LIU Brooklyn will be playing a game at the Barclays Center for the sixth straight season, while Lehigh will be making its first appearance at an NBA venue.

At 6-4, Lehigh has clinched a winning non-league record for the fourth time in the last five seasons.

After a nearly three-week layoff for final exams and the holidays, Lehigh will open up Patriot League play at home against Lafayette on Friday, Dec. 29.

LEHIGH'S PROJECTED STARTERS

Pos.	No.	Name	PPG	RPG	Notable
F	12	Gena Grundhoffer (So., 6-1)	10.3	4.5	Second career double-double at Sacred Heart
G	15	Camryn Buhr (So., 6-1)	11.5	6.8	Career-high 22 pts vs. Fairfield
G	20	Quinci Mann (Sr., 5-10)	13.0	2.4	Career-high six 3-pointers vs. Mt. St. Mary's
G	22	Hannah Hedstrom (So., 5-9)	4.7	5.2	Career-high 12 assists vs. Mansfield
F	44	Mae Williams (Sr., 6-0)	3.0	4.2	Tied career-high with 7 rebounds vs. NJIT

LEHIGH'S KEY RESERVES

Pos.	No.	Name	PPG	RPG	Notable
G	5	Bernadette Devaney (Sr., 5-8)	6.0	1.0	Averaging 13.3 ppg over last three games
F	13	Meagan Eripret (Jr., 6-3)	2.2	1.2	Season-high 7 points vs. Mansfield
G	14	Paige Galiani (So., 5-10)	2.3	0.3	Shooting 50% from three-point range this season
G	25	Mary Clougherty (Fr., 6-0)	2.2	1.5	Had three assists in collegiate debut at Minnesota
F	30	Camryn Benz (So., 6-3)	6.1	4.9	Shooting team-best 49 percent overall (min. 40 attempts)
F	34	Mariah Sexe (Fr., 6-2)	3.8	3.3	Career-high nine points vs. Fairfield

IF LEHIGH BEATS LIU BROOKLYN

- ❖ Lehigh would defeat a NEC opponent for the seventh time in the last eight matchups.
- ❖ Lehigh would improve to 2-0 in NHL/NBA arenas

LEHIGH HEAD COACH SUE TROYAN

Sue Troyan (Dickinson '88) is in her 23rd season at the helm of the Mountain Hawks, and carries a career record of 352-312 into Sunday's game. Since arriving in Bethlehem, she has turned the Lehigh program into a perennial Patriot League contender. A two-time Patriot League Coach of the Year, Troyan guided Lehigh to 19 wins and a Patriot League championship game appearance in 2014-15. Over the previous eight full seasons, Troyan has led Lehigh to a 167-114 record. She has led LU to three Patriot League Championships and NCAA Tournament berths during her tenure. Prior to becoming the head basketball coach, Troyan served as an assistant basketball coach and head softball coach at Lehigh, leading the softball team to a 126-90 record in five seasons.

ALL-TIME VS. LIU BROOKLYN

The Mountain Hawks and Blackbirds will meet for the first time in just over 10 years, with the last matchup coming in December 2007.

Lehigh holds a 2-2 record against LIU in away and neutral site games throughout the series history. LIU won the most recent matchup between the two 53-49 at Stabler Arena on Dec. 5, 2007. Lehigh won the previous matchup in November 2006 at LIU, coming away with a 57-36 win. The two squads have only met once in Brooklyn since 1991 and have only played twice in the Sue Troyan era.

Lehigh has been successful in recent years against the Northeast Conference, having won six of their last seven games against the NEC dating back to 2012. Their only loss during that stretch was last Sunday's setback a Sacred Heart.

SERIES HISTORY**LIU BROOKLYN**

Overall:	Lehigh 5-3
Last Meeting:	Dec. 5, 2007 - Bethlehem, Pa.
Last Result:	LIU Brooklyn 53-49
Current Streak:	LIU Brooklyn, W1

Last Five Meetings:

Dec. 5, 2007 (Home)	LIU Brooklyn 53-49
Nov. 12, 2006 (Away)	Lehigh 57-36
Nov. 29, 1993 (Home)	Lehigh 75-61
Dec. 6, 1992 (Neutral)	LIU Brooklyn 69-64
Dec. 7, 1991 (Road)	LIU Brooklyn 75-57

2017-18 BY THE NUMBERS

	Lehigh	LIU Brooklyn
Scoring Offense	64.0	56.2
Scoring Defense	63.8	63.5
Scoring Margin	+0.2	-7.2
Field Goal Pct.	40.6	35.6
Field Goal Pct. Defense	38.9	39.5
Free Throw Pct.	67.7	56.9
3FG Made Per Game	6.1	7.0
3FG Pct.	32.4	34.1
3FG Pct. Defense	31.6	29.0
Rebounding	40.0	35.8
Rebounding Allowed	35.7	44.9
Rebounding Margin	+4.3	-9.1
Assists	13.2	11.5
Steals	4.0	9.1
Turnovers	16.8	16.9

SCORE BY PERIOD

	1	2	3	4	OT1	Total
LEHIGH	153	153	151	183	0	640
OPPONENTS	165	168	159	146	0	638
	1	2	3	4	OT1	Total
LIU BROOKLYN	96	96	126	123	9	450
OPPONENTS	134	108	131	123	12	508

SCOUTING THE BLACKBIRDS

LIU Brooklyn is coming off a three-point overtime loss on Thursday night at George Mason, which dropped them to 3-5 on the year. Trailing by 14 points with less than six minutes to go, LIU staged a furious comeback to take the lead in the final 30 seconds, before falling 73-70 in OT. Freshman Jeydah Johnson scored a game-high 27 points, while Denisha Petty-Evans (19) and Deangelique Waithe (16) all combined to score 66 of LIU's 70 points.

This season, nearly 70 percent of the team's points have come from the combination of their three leading scorers, Petty-Evans (16.6 ppg), Johnson (14.0) and Drew Winter (8.0). Waithe is the team's leading rebounder with 7.5 boards per game. LIU has played only two games at home thus far, splitting matchups with Saint Peter's (W, 57-46) and No. 22/20 Michigan (L, 49-86).

Lehigh and LIU have one common opponent so far this season, having both defeated NJIT by double figures. LIU won at NJIT 67-49 on Nov. 29, and Lehigh won 64-50 at home on Dec. 6. LIU has played two other Patriot League schools this season, losing 71-37 at Army and falling 69-53 at Lafayette.

LIU has had the same five starters in all eight games this season.

The Blackbirds have played one game per year at the Barclay's Center since it opened in 2012-13 and are 0-5 all-time in the building.

2012-13: L, 41-66 vs. Mount St. Mary's
 2013-14: L, 48-69 vs. St. Francis Brooklyn
 2014-15: L, 69-76 vs. Mount St. Mary's
 2015-16: L, 56-63 vs. Sam Houston State
 2016-17: L, 45-67 vs. UMBC

LIU BROOKLYN PROJECTED STARTERS

Pos.	No.	Name	PPG	RPG
G	0	Jeydah Johnson (Fr., 5-10)	14.0	4.4
F	10	Deangelique Waithe (Sr., 6-0)	7.1	7.5
G	11	Drew Winter (R-Jr., 5-7)	8.0	5.3
G	15	Denisha Petty-Evans (Gr., 5-10)	16.6	4.1
G/F	30	Stylz Sanders (Sr., 5-9)	2.9	5.0

LIU BROOKLYN KEY RESERVES

Pos.	No.	Name	PPG	RPG
G	5	Tia Montagne (Fr., 5-8)	2.6	1.3
F	12	Ella Vaatanen (Fr., 6-1)	0.9	0.6
G	20	Seneca Richards (So., 5-11)	2.9	1.5
F	31	Destoni Willock (Jr., 6-0)	1.3	1.6

LIU BROOKLYN HEAD COACH STEPHANIE DEL PREORE

Now in her third season at LIU Brooklyn, Stephanie Del Preore has mentored three All-NEC selections and a NEC All-Rookie honoree, while guiding the team to a combined 18-49 record.

Prior to arriving at LIU, Del Preore spent three seasons as the top assistant at Seton Hall, guiding the Pirates to the NCAA Tournament and a school record 28 wins in 2014-15. During that season, the Pirates cracked the Associated Press Top 25 for the first time in nearly two decades.

Prior to Seton Hall, Del Preore spent three years as an assistant at the University of Bridgeport, as well as stints at Caldwell College and Stevens Institute of Technology.

A one thousand point scorer at Marist, Del Preore averaged 10.2 points and 6.2 rebounds per game in four years and ranked in the top six all-time in both categories at Marist at the time of her graduation in 2004. She later played professionally in Spain for one season.

LEHIGH'S 1,000 POINT SCORERS

1. Anne Tierney - 1,807 (1999-03)
2. Sherie Androlewicz - 1,699 (1986-90)
3. Erica Prosser - 1,676 (2007-11)
4. Shawn Steward - 1,638 (1982-86)
5. Kerry Kinek - 1,571 (2012-2016)
6. Jessica DePalo - 1,466 (2001-05)
7. Sandy Hume - 1,357 (1986-91)
- Alex Ross - 1,357 (2006-2010)
9. Sara Ellis - 1,342 (2003-07)
10. Danielle Baldwin - 1,339 (1996-00)
11. Jeanne Mooney - 1,301 (1986-90)
12. Liz Feeley - 1,275 (1982-86)
13. **Quinci Mann - 1,239 (2014-present)**
14. Kelly Madden - 1,136 (1993-97)
15. Emily Gratch - 1,122 (2008-2012)
16. Katie O'Reilly - 1,067 (2011-2015)
17. Lexi Martins - 1,050 (2013-2016)
18. Jessica Mudry - 1,030 (1992-96)
19. Maureen Trigo - 1,024 (1996-00)

LEHIGH'S ALL-TIME REBOUNDING LEADERS

1. Anne Tierney - 1,129 (1999-03)
2. Kerry Kinek - 960 (2012-2016)
3. Lexi Martins - 881 (2013-2016)
4. Jen Siemaszko - 788 (1987-91)
5. Alexa Williams - 779 (2008-12)
6. Karen Lelinski - 760 (1976-80)
7. Tricia Smith - 679 (2005-09)
8. Sandy Hume - 647 (1986-91)
9. Jessica DePalo - 639 (2001-05)

LEHIGH'S
1,000 POINT/500 REBOUND CLUB

1. Sandy Hume - 1,357/647 (1986-91)
2. Maureen Trigo - 1,024/504 (1996-00)
3. Anne Tierney - 1,807/1,129 (1999-03)
4. Jessica DePalo - 1,466/639 (2001-05)
5. Emily Gratch - 1,122/510 (2008-12)
6. Kerry Kinek - 1,571/960 (2012-2016)
7. Lexi Martins - 1,050/881 (2013-2016)

CAREER THREE-POINT FIELD GOALS

1. Alex Ross - 286 (2006-10)
2. Sara Ellis - 238 (2003-07)
3. Erica Prosser - 166 (2007-11)
4. **Quinci Mann - 159 (2014-present)**
5. Carli Toliver - 158 (2000-05)
6. Cat Nicholson - 147 (1999-03)
7. Mary Beth Bedics - 144 (1991-95)
8. Danielle Baldwin - 141 (1996-00)
9. Dawn Gorynski - 95 (2002-05)
10. Kelly Peterson - 94 (2009-13)
11. Jessica Mudry - 79 (1992-96)

PLAYING ON THE BIG STAGE

Sunday's game against LIU Brooklyn will be part of a doubleheader at the Barclays Center, home of the Brooklyn Nets. This will mark the first time in program history Lehigh has played in an arena that served as the home for an NBA team at the time. On Dec. 18, 2008, Lehigh defeated NJIT 65-54 at the Prudential Center in Newark, which two years later became the temporary home for the former New Jersey Nets.

This season, Lehigh has also played at larger venues like PPL Center in Allentown, Pa. (Villanova) and Williams Arena in Minneapolis (Minnesota).

GRUNDHOFFER SURGING

Over the last three games, sophomore Gena Grundhoffer is leading the team with 14 points and seven rebounds per game. She has scored in double figures in all three games, including 18 points and a career-high 13 rebounds at Sacred Heart on Dec. 3 for her second career double-double. Grundhoffer's other double-double also came against Sacred Heart last year at Stabler Arena with a 19-point, 11 rebound performance.

BRINGING THE BLOCK PARTY TO BROOKLYN

Lehigh recorded six blocks in Wednesday's win over NJIT, their most in a game since rejecting 11 shots vs. Mount St. Mary's on Nov. 19, 2013. As a team, Lehigh ranks second in the Patriot League with 3.8 blocks per game.

EDUCATION DAY

Lehigh hosted its eighth annual Education Day on Dec. 6 with a 64-50 win over NJIT. LU welcomed 4,009 elementary and middle school students from Bethlehem and Allentown to Stabler Arena, which was the third largest crowd in program history. Last year's event against Delaware State drew a LU women's basketball record crowd of 4,410, surpassing the previous benchmark of 4,078 that was set on Dec. 2, 2014 against Hampton.

BERN BABY BERN

Senior Bernadette Devaney was red hot last week, scoring 32 points over two games on 10-of-20 shooting, including a 10-for-15 performance from three-point range. She scored a career-high 20 points on Nov. 29 against Mount St. Mary's, besting her previous career-high of 13, which she had done three times. She also knocked down a career-best six three pointers on 6-of-9 shooting in the game. Over her last three games, she is averaging 13.3 ppg.

GETTING BEATEN THE BUZZER

This season, opponents have scored seven baskets, including six three-pointers, in the final three seconds of periods against Lehigh (out of a possible 40 periods). The Mountain Hawks have scored three buzzer-beaters of their own during the same stretch, combining for eight points.

MOVING UP THE LIST

Senior Quinci Mann has moved into fourth on the school's all-time three-point list with 159 career triples. She enters Sunday's game just seven three-pointers away from tying Erica Prosser for third on the school's all-time list. She sank a career-high six three-pointers on Nov. 29 against Mount St. Mary's. She ranks ninth in the Patriot League with 13.0 ppg and seventh with 1.6 3FG/game.

LIVING DOWNTOWN

Lehigh registered its best shooting night of the season against Mount St. Mary's on Nov. 29, when they shot 50 percent overall and 56.5 percent from three-point range. Lehigh drained 13 three-pointers in the game, their most since they made 13 against Binghamton on Dec. 4, 2010.

2017 X-MAS CLASSIC RECAP

Lehigh advanced to the finals of the Christmas City Classic for the 16th time in the 20-year history of the tournament. After holding off Fairfield 56-53 in the opening round, Lehigh rallied from a 21-point fourth quarter deficit to get within four points of La Salle, before eventually falling 69-61. Lehigh has won four titles, with the most recent coming in 2010.

WHAT'S RETURNING?

Category	2016-17 Total	Returns in 2017-18	Lost in 2017-18	Percent Return
Points	1896	1754	142	92.5%
Field Goals Made	650	602	48	92.6%
Field Goal Attempts	1743	1602	141	91.9%
3-point Goals Made	212	189	23	89.2%
3-point Attempts	650	579	71	89.1%
Free Throws Made	384	361	23	94.0%
Free Throw Attempts	540	508	32	94.1%
Rebounds	1103	994	109	90.1%
Offensive Rebounds	317	284	33	89.6%
Defensive Rebounds	786	710	76	90.3%
Assists	324	292	32	90.1%
Turnovers	482	441	41	91.5%
Blocks	75	68	7	90.7%
Steals	177	157	20	88.7%
Minutes	6000	5467	533	91.1%

CAREER ASSISTS

1. Sherie Androlewicz - 581 (1986-90)
2. Erica Prosser - 541 (2007-11)
3. Jessica Mudry - 497 (1992-96)
4. Claire Sullivan - 474 (2004-09)
5. Shawn Steward - 471 (1982-86)
6. Hope Pellicane - 393 (1989-93)
7. Sara Ellis - 369 (2003-07)
8. Danielle Baldwin - 365 (1996-00)
9. Kelly Madden - 299 (1993-97)
10. Chantal St. Laurent - 297 (2001-05)

HIGHEST SINGLE GAME POINT TOTALS

1. 103 vs. Albright (W, 103-34) 2/3/77
2. 96 at Bucknell (W, 96-91 - 2OT) 2/16/00
3. 95 vs. Monmouth (W, 95-88 - OT) 11/13/15
- 95 vs. Mt. St. Mary's (W, 95-67) 11/19/13
5. 94 vs. Drexel (W, 94-77) 2/10/87
6. 93 at Niagara (W, 93-73) 11/8/13
- 93 vs. Bucknell (W, 93-78) 1/13/90
- 93 vs. Bucknell (W, 93-77) 3/5/86
9. 92 at Rider (W, 92-76) 2/10/90
- 92 at Rider (W, 92-78) 3/8/86
- 92 vs. Brooklyn Coll. (W, 92-73) 11/27/85

PATRIOT LEAGUE NETWORK

Every Lehigh hoops home game, in addition to every away league game, will be streamed for free live on the Patriot League Network (PatriotLeague.TV).

LEHIGH ON THE AIRWAVES

At least five games this season can also be heard on ESPN Radio in the Lehigh Valley (1160/1230/1320 AM). Many other games will be audio streamed at Lehighsports.com/watch. Check Lehighsports.com for up-to-date broadcast information.

SHINING ON THE SMALL SCREEN

The Lehigh women's basketball program will make regular appearances on Service Electric TV-2 (Lehigh Valley). At least 10 home matchups will air live locally. Check LehighSports.com for up-to-date broadcast information.

Date	Opponent	Outlet
Dec. 6	NJIT	SE2
Dec. 29	Lafayette	SE2
Jan. 2	Navy	SE2
Jan. 8	Boston U.	SE2
Jan. 11	Bucknell	SE2
Jan. 20	Army West Point	SE2
Feb. 10	American	SE2
Feb. 14	Colgate	SE2
Feb. 21	Loyola (Md.)	SE2
Feb. 28	Holy Cross	SE2

Sophomore Camryn Buhr scored a career-high 22 points against Fairfield in Saturday's first round action and added 10 more on Sunday to be named to the all-tournament team. Buhr averaged 16 points, four rebounds, one assist and one steal over the two games.

TIS' THE SEASON OF GIVING

Sophomore Hannah Hedstrom is averaging 5.7 assists per game over the last six contests. In Lehigh's win over Mansfield on Nov. 22, she dished out a career-high 12 assists, coming just three shy of tying the program's single-game record of 15 held by Patty Garnish (1976) and Hope Pellicane (1993). Hedstrom also registered a pair of six-assist games against Fairfield on Nov. 25 and Mount St. Mary's on Nov. 29. Her 4.1 assts/gm ranks second in the Patriot League.

FINISHING STRONG

The fourth quarter has been the Mountain Hawks best quarter this season, where they have outscored their opponents by an average of 18.3-14.6. Lehigh has only been outscored once in the fourth quarter of only one game this season (11-8 at Sacred Heart), while currently being outscored by their opponents in all other quarters.

CRASHING THE BOARDS

Lehigh's game against La Salle on Nov. 26 is the only time in eight games this season that Lehigh has been outrebounded. Through the first 10 games, Lehigh holds a rebounding margin of +4.3, which ranks fourth in the Patriot League, and the team has climbed to has high as second in that category this season. Lehigh also ranks fourth in the PL in defensive rebounding (28.3).

Last season, Lehigh's rebounding margin through its non-league schedule (11 games) was -2.0.

PATRIOT LEAGUE PRESEASON POLL

Lehigh was picked seventh in the Patriot League Preseason Poll and is looking to rebound after a ninth place finish in last year's Patriot League standings. LU fell in the first round of the league tournament to Loyola. It was the first time Lehigh had failed to qualify for at least the semifinals since the league went to the current tournament format in 2013-14.

2017 Preseason Poll

1. Bucknell - 140 (7 first-place votes)
1. Army West Point - 140 (7)
3. American - 134 (5)
4. Navy - 119 (1)
5. Boston U. - 91
6. Holy Cross - 81
7. Lehigh - 64
8. Colgate - 55
9. Loyola - 54
10. Lafayette - 22

LEAGUE RANKS

2017-18 Team Rankings

Category	Stat	PL Rank
Scoring Offense	64.0 ppg	5th
Scoring Margin	+0.2	7th
3FG%	32.4	5th
3pt. FG Made/Game	6.1	4th
Free Throw Pct	67.7	5th
Offensive Rebounds	11.7	5th
Defensive Rebounds	28.3	4th
Rebounding Margin	4.3	4th
Blocks	3.8	2nd

Individual

Category	Stat	PL Rank
Cameryn Benz	49.0 FG%	9th
Camryn Buhr	6.8 rpg	10th
Camryn Buhr	2.3 off. rb/gm	T-6th
Camryn Buhr	30.9 min/game	8th
Camryn Buhr	76.7 FT%	4th
Bernadette Devaney	41.7 3FG%	10th
Hannah Hedstrom	4.1 assists/game	2nd
Quinci Mann	13.0 ppg	9th
Quinci Mann	1.6 3FG/gm	7th
Quinci Mann	76.5 FT%	5th

THE LAST TIME A LEHIGH TEAM...

Scored 90+ points

11/16/16 vs. Delaware State
Lehigh won, 91-80

Allowed 90+ points

11/11/17 at Minnesota
Minnesota won, 107-73

Shot 50% or better from the floor

11/29/17 vs. Mount St. Mary's
 50.0%
Lehigh won, 75-71

Had two 20+ point scorers in a game

11/29/17 vs. Mount St. Mary's
 (Quinci Mann 20, Bernadette Devaney 20)
Lehigh won, 75-71

Had two players with 10+ rebounds

2/13/16 at Holy Cross
 (Lexi Martins 15, Kerry Kinek 10)
Holy Cross won, 77-71 (OT)

Had two players earn a double-double

1/6/16 vs. Loyola
 (Lexi Martins 17 pts, 18 reb.,
 Kerry Kinek 16 pts, 10 reb.)
Lehigh won, 66-48

Played an overtime game

2/13/16 at Holy Cross
Holy Cross won, 77-71

Played a double overtime game

11/24/12 vs. Monmouth (2OT)
Monmouth won, 62-54

Had at least four players in double-figures

11/11/17 at Minnesota
 Hannah Hedstrom (12), Mae Williams (11),
 Quinci Mann (10), Cameryn Benz (10)
Minnesota won, 107-73

Allowed a 20+ point scorer

11/29/17 vs. Mount St. Mary's
 Kayla Agentowicz (20)
Lehigh won, 75-71

Allowed a 30+ point scorer

11/16/16 vs. Delaware State
 Najai Pollard (38)
Lehigh won, 91-80

THE LAST TIME A LEHIGH PLAYER...

Recorded a double-double (Pts., Reb.)

Gena Grundhoffer (18 pts., 13 reb.)
 12/3/17 at Sacred Heart

Recorded a double-double (Pts., Asst.)

Erica Prosser (19 pts., 10 asst.)
 2/26/11 vs. Holy Cross

Scored 30+ points in a game

Jenny Callan (31)
 2/15/06 vs. Colgate

Scored 25-29 points in a game

Quinci Mann (26)
 2/1/17 vs. Loyola

Blocked 5 or more shots in a game

Alexandra Yantzi (7)
 1/25/14 at Lafayette

Made 5+ three pointers in a game

Quinci Mann and Bernadette Devaney (6)
 11/29/17 vs. Mount St. Mary's

Made 10+ field goals in a game

Lexi Martins (10)
 2/20/16 at Lafayette

Recorded 15+ rebounds in a game

Lexi Martins (15)
 3/7/16 vs. Holy Cross - PL Quarterfinals

Recorded 5 or more steals in a game

Katie O'Reilly (8)
 2/7/15 vs. Loyola

Recorded 6 or more assists in a game

Hannah Hedstrom (6)
 11/29/17 vs. Mount St. Mary's

Recorded 10 or more assists in a game

Hannah Hedstrom (12)
 11/22/17 vs. Mansfield

LEHIGH
SINGLE GAME RECORDS

POINTS

Liz Feeley (3/5/86) 37

REBOUNDS

Lexi Martins (11/19/15) 23

ASSISTS

Patty Garnish (2/3/76) 15

Hope Pellicane (2/17/93) 15

STEALS

Jessica Mudry (11/28/95) 10

Helga Schlape (3/5/86) 10

BLOCKS

Ellen Silver (1/31/84) 10

FG MADE

Liz Feeley (3/5/86) 16

FG ATT.

Jessica DePalo (3/5/05) 29

FG%

Katie O'Reilly (11/19/13) .875 (7-for-8)

Adrienne Blount (11/20/05) .875 (7-for-8)

FT MADE

Quinci Mann (2/1/17) 16

FT ATT.

Mary Beth Collins (12/10/94) 18

THREE POINT FG MADE

Alex Ross (12/20/08) 9

PATRIOT LEAGUE 2017-18 INDIVIDUAL LEADERS

SCORING

1. Manis (HC)	20.3
2. Thomas-Waheed (HC)	17.9
3. Hovren (ARMY)	16.7
4. Karcz (LOY)	15.9
5. Slagus (BUCK)	13.8

FIELD GOAL PCT

1. Hauck (BU)	.540
2. Taylor (NAVY)	.539
3. King (GATE)	.529
4. Thompson (GATE)	.522
5. Karcz (LOY)	.516

FREE THROW PCT

1. Williams (BU)	.933
2. Manis (HC)	.789
3. Murray (ARMY)	.769
4. Buhr (LEHIGH)	.767
5. Mann (LEHIGH)	.765

3FG PCT

1. Thompson (BU)	.800
2. Ptasinski (LAF)	.500
3. Taylor (NAVY)	.500
4. Pedi (HC)	.500
5. Fenske (NAVY)	.480

REBOUNDING

1. Kucowski (LAF)	11.9
2. Hovren (ARMY)	11.4
3. Slagus (BUCK)	9.3
3. Manis (HC)	9.3
5. Clark (NAVY)	8.9

ASSISTS

1. Nelson (BU)	5.4
2. Hedstrom (LEHIGH)	4.1
3. Kinneston (AMER)	3.9
4. Dunham (NAVY)	3.8
5. McNeal (ARMY)	3.7

STEALS

1. Karcz (LOY)	3.6
2. Manis (AMER)	2.4
3. Morris, Diaz. (ARMY)	2.2
4. Nelson (BU)	2.0
5. Stipa (LAF)	1.9

3FG MADE

1. Nelson (BU)	3.0
2. Fenske (NAVY)	2.7
3. Ptasinski (LAF)	2.5
4. Dunham (NAVY)	2.3
4. Gray (ARMY)	1.8

LAST TIME OUT FOR LEHIGH

DECEMBER 6, 2017

LEHIGH 64, NJIT 50

BETHLEHEM, Pa. – The Lehigh women's basketball team overcame a sloppy first half start to take down NJIT 64-50 in at the team's eighth annual Education Day on Wednesday morning. The crowd of 4,009 at Stable Arena was the third largest crowd to attend a Lehigh women's home game. Senior Quincy Mann led all scorers with 15 points on 6-for-11 shooting. Sophomore Gena Grundhoffer scored 12 points to go with six rebounds, sophomore Camryn Buhr added seven points and six rebounds, and freshman Mariah Sexe collected seven points and five rebounds. Senior Mae Williams tied her career-high with a team-leading seven rebounds, and Bernadette Devaney also chipped in eight points. The Mountain Hawks shot 48.1 percent (25-for-52) from the field and held NJIT to 34.5 percent overall and just 2-for-11 from three-point range. Lehigh (6-4) also outscored the Highlanders (0-9) 36-22 in the paint and 15-0 in transition.

Ten different players scored points for the Brown and White in the game, while the team registered a season-high six blocks.

"When we executed our stuff and took care of the ball we had good shots, played unselfishly and distributed the ball well," said head coach Sue Troyan. "It was just the inconsistency of doing that for 40 minutes. We had too many turnovers and were lackadaisical at times with the basketball; that's the frustrating part."

Despite holding a lead for over 11 minutes, Lehigh struggled through the first half, turning the ball over 11 times with NJIT collecting four steals.

NJIT jumped out to an early 9-6 lead at the first media timeout. Cameryn Benz hit a baseline jumper and then came down with a block on the defensive end, leading to a transition basket by Hedstrom to knot it up 14-14 with 1:16 left in the first. NJIT then collected an offensive rebound and put back as time expired on the quarter to take a 16-14 lead after one.

Sexe completed a three-point play with a hoop and free throw after drawing a foul to give Lehigh a 17-16 lead in the opening moments of the second quarter. Mann then added a three-pointer to make it 20-16 before the Highlanders battled back to tie the game at 24 at the 4:02 mark, before Devaney responded with a triple from the corner to make it 27-24. Lehigh built its largest lead of the half at seven with 1:03 to go following two free throws by Devaney to make it 33-26. A three-point play for the Highlanders, followed by two free throws cut the deficit to 33-31 going into the locker room. Sexe had five points and all five of her rebounds in a solid opening half to help lead Lehigh.

"Mariah played really well for us in the first half," Troyan said. "She gave us some good minutes and is just a strong post who is going to rebound and defend for you."

Lehigh started the second half with a surge, opening the frame on a 13-2 run to take control.

"I challenged them, honestly, on both ends of the floor," Troyan said. "We had to handle the ball better and make better decisions with the basketball and play with a higher level of intensity on defense. I thought we did a really good job in the third quarter coming up on the defensive end, really contesting shots and not giving them anything easy."

Buhr added a three-point play with a hoop and foul to make it 42-31 just under three minutes in. Mann and Grundhoffer scored two points each to get the lead to 13 with just under six minutes to go, and NJIT would get no closer than eight points the rest of the way as Lehigh held a 51-41 lead after three quarters.

Grundhoffer got the lead to 15 for the first time with a jumper in the opening minute of the fourth quarter. After the Highlanders got to within 11 with 7:04 to play, Lehigh rattled off eight straight over the next two and a half minutes courtesy of a fast break bucket by Williams, back-to-back layups from Meagan Eripret and a transition lay-in from Mann to open it up to a game-high 19 point, 64-45 lead with 4:30 left. NJIT would add five points in the final two minutes to cap the scoring.

"I was really impressed with how Mae (Williams) went in there in the fourth quarter and gave us some good minutes," Troyan said. "She defended well inside and did a nice job finishing inside as well."

Scoring Leaders:**Lehigh:**

Quinci Mann (15)

Gena Grundhoffer (12)

NJIT:

Tatianna Torres (13)

Taj Lewis (12)

Rebounding Leaders:**Lehigh:**

Mae Williams (7)

NJIT:

Taj Lewis (8)

Assist Leaders:**Lehigh:**

Hannah Hedstrom (4)

NJIT:

Three different players (1)

AROUND THE
PATRIOT LEAGUE

2017-18 PATRIOT LEAGUE

STANDINGS

	League			Overall		
	W	L	Pct.	W	L	Pct.
Navy	0	0	.000	9	0	.1000
Boston U.	0	0	.000	5	2	.714
Army	0	0	.000	6	3	.667
Bucknell	0	0	.000	6	3	.667
American	0	0	.000	5	3	.625
LEHIGH	0	0	.000	6	4	.600
Colgate	0	0	.000	4	5	.444
Holy Cross	0	0	.000	3	5	.375
Lafayette	0	0	.000	3	5	.375
Loyola	0	0	.000	2	6	.250

*thru 12/8

UPCOMING SCHEDULE

Saturday, December 9

Denver at American.....12 p.m.

Vermont at Holy Cross.....12 p.m.

Lafayette at Robert Morris.....1 p.m.

Towson at Loyola.....1 p.m.

Marist at Boston U2 p.m.

Sunday, December 10

Brown at Colgate.....12 p.m.

Lehigh at LIU Brooklyn.....1 p.m.

Navy at New Mexico.....3 p.m.

Army West Point at Marquette.....4 p.m.

Monday, December 11

Loyola at Maryland.....6 p.m.

Wednesday, December 13

UCF at Boston U.....7 p.m.

Saturday, December 16

St. Joseph's Brooklyn at Army1 p.m.

Sunday, December 17

Bucknell at Fordham.....2 p.m.

Holy Cross at Rode Island2 p.m.

American at George Washington2 p.m.

PATRIOT LEAGUE WEEKLY AWARDS

Player of the Week

11/13/17 - Kaitlyn Slagus, Bucknell
 11/20/17 - Infiniti Thomas-Waheed, Holy Cross
 11/27/17 - Madison Hovren, Army West Point
 12/4/17 - Madison Hovren, Army West Point

Rookie of the Week

11/13/17 - Natalie Kucowski, Lafayette
 11/20/17 - Katie Nelson, Boston U.
 11/27/17 - Katie Nelson, Boston U.
 12/4/17 - Natalie Kucowski, Lafayette

LEHIGH INDIVIDUAL SEASON/CAREER HIGHS

5 BERNADETTE DEVANEY - Senior

2017-18 SEASON HIGH	CAREER HIGH
20 (vs. Mt. St. Mary's 11/29/17).....POINTS...	20 (vs. Mt. St. Mary's 11/29/17)
2 (three times).....REBOUNDS.....	3 (six times)
3 (at Villanova 11/17/17).....ASSISTS.....	3 (eight times)
6 (vs. Mt. St. Mary's 11/29/17) .. 3 FG MADE ..	6 (vs. Mt. St. Mary's 11/29/17)
24 (twice).....MINUTES.....	26 (at Holy Cross 2/13/16)

11 EMILY JOHNSON - Freshman

2017-18 SEASON HIGH	CAREER HIGH
N/A.....POINTS.....	N/A
N/A.....REBOUNDS.....	N/A
N/A.....ASSISTS.....	N/A
N/A.....MINUTES.....	N/A

12 GENA GRUNDHOFFER - Sophomore

2017-18 SEASON HIGH	CAREER HIGH
18 (at Sacred Heart 12/3/17).....POINTS.....	20 (vs. Holy Cross 2/11/17)
13 (at Sacred Heart 12/3/17).....REBOUNDS.....	13 (at Sacred Heart 12/3/17)
4 (vs. Mt. St. Mary's 11/29/17).....ASSISTS.....	7 (vs. Colgate 3/1/17)
32 (at Sacred Heart 12/3/17).....MINUTES.....	37 (vs. Colgate 3/1/17)

13 MEAGAN ERIPRET - Junior

2017-18 SEASON HIGH	CAREER HIGH
7 (vs. Mansfield 11/22/17).....POINTS.....	11 (at Loyola 3/4/17)
5 (vs. Mansfield 11/22/17) ...REBOUNDS.....	8 (at Loyola 3/4/17)
1 (at Villanova 11/17/17).....ASSISTS.....	1 (four times)
2 (at Villanova 11/17/17).....BLOCKS.....	3 (vs. Bucknell 1/11/17)
14 (vs. Mansfield 11/22/17) ...MINUTES.....	19 (vs. Bucknell 1/11/17)

14 PAIGE GALIANI - Sophomore

2017-18 SEASON HIGH	CAREER HIGH
6 (vs. Mansfield 11/22/17).....POINTS.....	6 (twice)
1 (twice).....REBOUNDS.....	1 (seven times)
2 (vs. Mansfield 11/22/17).....ASSISTS.....	2 (vs. Mansfield 11/22/17)
2 (vs. Mansfield 11/22/17) .. 3 FG MADE ..	2 (vs. Mansfield 11/22/17)
9 (vs. Mansfield 11/22/17).....MINUTES.....	9 (vs. Mansfield 11/22/17)

15 CAMRYN BUHR - Sophomore

2017-18 SEASON HIGH	CAREER HIGH
22 (vs. Fairfield 11/25/17).....POINTS.....	22 (vs. Fairfield 11/25/17)
11 (vs. Mansfield 11/22/17) ..REBOUNDS.....	11 (vs. Mansfield 11/22/17)
5 (vs. Mt. St. Mary's 11/29/17).....ASSISTS.....	5 (twice)
40 (at Sacred Heart 12/3/17) ..MINUTES...	40 (at Sacred Heart 12/3/17)

20 QUINCI MANN - Senior

2017-18 SEASON HIGH	CAREER HIGH
24 (at Monmouth 11/14/17).....POINTS.....	26 (vs. Loyola 2/1/17)
5 (vs. Mansfield 11/22/17) ...REBOUNDS.....	8 (vs. Navy 1/18/17)
5 (at Sacred Heart 12/3/17).....ASSISTS.....	6 (vs. Bucknell 1/28/15)
6 (vs. Mt. St. Mary's 11/29/17) .. 3 FG MADE ..	6 (vs. Mt. St. Mary's 11/29/17)
35 (twice).....MINUTES.....	37 (at Rider 12/17/15)

22 HANNAH HEDSTROM - Sophomore

2017-18 SEASON HIGH	CAREER HIGH
13 (vs. La Salle 11/26/17).....POINTS...	14 (at Mt. St. Mary's 11/22/16)
9 (at Minnesota 11/11/17).....REBOUNDS.....	9 (twice)
12 (vs. Mansfield 11/22/17).....ASSISTS.....	12 (vs. Mansfield 11/22/17)
39 (vs. La Salle 11/26/17).....MINUTES.....	39 (vs. La Salle 11/26/17)

23 ANN-MARIE JACOBS - Freshman

2017-18 SEASON HIGH	CAREER HIGH
N/A.....POINTS.....	N/A
N/A.....REBOUNDS.....	N/A
N/A.....ASSISTS.....	N/A
N/A.....MINUTES.....	N/A

24 BRYCE MENENDEZ - Junior

2017-18 SEASON HIGH	CAREER HIGH
N/A.....POINTS.....	6 (twice)
N/A.....REBOUNDS.....	2 (twice)
N/A.....ASSISTS.....	1 (twice)
N/A.....MINUTES.....	11 (twice)

25 MARY CLOUGHERTY - Freshman

2017-18 SEASON HIGH	CAREER HIGH
5 (vs. Mansfield 11/22/17).....POINTS.....	5 (vs. Mansfield 11/22/17)
4 (at Minnesota 11/11/17) ...REBOUNDS.....	4 (at Minnesota 11/11/17)
3 (at Minnesota 11/11/17).....ASSISTS.....	3 (at Minnesota 11/11/17)
16 (at Minnesota 11/11/17) ...MINUTES.....	16 (at Minnesota 11/11/17)

30 CAMERYN BENZ - Sophomore

2017-18 SEASON HIGH	CAREER HIGH
14 (at Villanova 11/17/17).....POINTS.....	14 (at Villanova 11/17/17)
8 (at Monmouth 11/14/17) ...REBOUNDS.....	8 (at Monmouth 11/14/17)
2 (at Villanova 11/17/17).....ASSISTS.....	3 (vs. Army 12/30/16)
29 (vs. La Salle 11/26/17).....MINUTES.....	29 (twice)

33 HAILEY PASCOE - Junior

2017-18 SEASON HIGH	CAREER HIGH
N/A.....POINTS.....	16 (at Holy Cross 1/14/17)
N/A.....REBOUNDS.....	6 (vs. Lafayette 1/27/16)
N/A.....ASSISTS.....	2 (seven times)
N/A.....3 FG MADE ..	4 (three times)
N/A.....MINUTES.....	31 (vs. Navy 1/18/17)

34 MARIAH SEXE - Freshman

2017-18 SEASON HIGH	CAREER HIGH
9 (vs. Fairfield 11/25/17).....POINTS.....	9 (vs. Fairfield 11/25/17)
6 (vs. Mansfield 11/22/17) ...REBOUNDS...	6 (vs. Mansfield 11/22/17)
2 (at Villanova 11/17/17).....ASSISTS.....	2 (at Villanova 11/17/17)
2 (twice).....BLOCKS.....	2 (twice)
16 (vs. Mansfield 11/22/17) ...MINUTES.....	16 (vs. Mansfield 11/22/17)

44 MAE WILLIAMS - Senior

2017-18 SEASON HIGH	CAREER HIGH
11 (at Minnesota 11/11/17).....POINTS.....	11 (at Minnesota 11/11/17)
7 (twice).....REBOUNDS.....	7 (five times)
5 (vs. Fairfield 11/25/17).....ASSISTS.....	5 (vs. Fairfield 11/25/17)
30 (at Cornell 11/20/17).....MINUTES.....	30 (at Cornell 11/20/17)

NUMERICAL ROSTER

No	Name	Class	Pos.	Ht.	Hometown/High School	Major
5	Bernadette Devaney	Sr.	G	5-8	Cooper City, Fla./Nova	Management
11	Emily Johnson	Fr.	F	6-1	Franklin Square, N.Y./Archbishop Molloy	Arts and Sciences
12	Gena Grundhoffer	So.	F	6-1	Wisconsin Rapids, Wisc./Assumption	Business
13	Meagan Eripret	Jr.	F	6-3	Allentown, Pa./Salisbury	English
14	Paige Galiani	So.	G	5-10	Great Falls, Va./Langley	Business
15	Camryn Buhr	So.	G	6-1	Mishawaka, Ind./Penn	Arts and Sciences
20	Quinci Mann	Sr.	G	5-10	Oakland, Calif./St. Ignatius Prep	Political Science
22	Hannah Hedstrom	So.	G	5-9	Minnetonka, Minn./Minnetonka	Biology
23	Ann-Marie Jacobs	Fr.	G	5-11	Clyde Hill, Wash./Bellevue	Business
24	Bryce Menendez	Jr.	F	6-2	Naperville, Ill./Neuqua Valley	Bioengineering
25	Mary Clougherty	Fr.	G	6-0	Herndon, Va./Chantilly	Business
30	Cameryn Benz	So.	F	6-3	Montgomery, N.J./Montgomery	Business
33	Hailey Pascoe	Jr.	G	5-9	Concord, Calif./Clayton Valley	Psychology
34	Mariah Sexe	Fr.	F	6-2	Woodbury, Minn./East Ridge	Arts and Sciences
44	Mae Williams	Sr.	F	6-0	Lafayette, Colo./Monarch	Bioengineering

ALPHABETICAL ROSTER

No	Name	Class	Pos.	Ht.	Hometown/High School	Major
30	Cameryn Benz	So.	F	6-3	Montgomery, N.J./Montgomery	Business
15	Camryn Buhr	So.	G	6-1	Mishawaka, Ind./Penn	Arts and Sciences
25	Mary Clougherty	Fr.	G	6-0	Herndon, Va./Chantilly	Business
5	Bernadette Devaney	Sr.	G	5-8	Cooper City, Fla./Nova	Management
13	Meagan Eripret	Jr.	F	6-3	Allentown, Pa./Salisbury	English
14	Paige Galiani	So.	G	5-10	Great Falls, Va./Langley	Business
12	Gena Grundhoffer	So.	F	6-1	Wisconsin Rapids, Wisc./Assumption	Business
22	Hannah Hedstrom	So.	G	5-9	Minnetonka, Minn./Minnetonka	Biology
23	Ann-Marie Jacobs	Fr.	G	5-11	Clyde Hill, Wash./Bellevue	Business
11	Emily Johnson	Fr.	F	6-1	Franklin Square, N.Y./Archbishop Molloy	Arts and Sciences
20	Quinci Mann	Sr.	G	5-10	Oakland, Calif./St. Ignatius Prep	Political Science
24	Bryce Menendez	Jr.	F	6-2	Naperville, Ill./Neuqua Valley	Bioengineering
33	Hailey Pascoe	Jr.	G	5-9	Concord, Calif./Clayton Valley	Psychology
34	Mariah Sexe	Fr.	F	6-2	Woodbury, Minn./East Ridge	Arts and Sciences
44	Mae Williams	Sr.	F	6-0	Lafayette, Colo./Monarch	Bioengineering

PRONUNCIATION GUIDE

5 - Bernadette Devaney
 12 - Gena Grundhoffer
 13 - Meagan Eripret
 14 - Paige Galiani
 15 - Camryn Buhr
 25 - Mary Clougherty
 34 - Mariah Sexe
 Coach - Ariel Braker
 Coach - Cait Gillard
 Coach - Carlyne Heston
 Coach - Sue Troyan

de-VEIN-ee
 JEE-nuh
 AIR-eh-PRAY
 GAL-ee-ON-ee
 boo-hr
 CLOCK-er-TEE
 sex-ee
 BREAK-er
 GILL-erd
 CARE-o-line
 Troy-in

Head Coach: Sue Troyan (Dickinson '88) - 23rd season

Associate Head Coach: Glenn Rigney (Miami '79) - 14th season

Assistant Coach: Cait Gillard (Colgate '08) - Eighth season

Assistant Coach: Ariel Braker (Notre Dame '14) - First season

Director of Operations: Carlyne Heston (Holy Family '14) - Second season





#5 Bernadette Devaney

Guard • Senior • 5-8
Cooper City, Fla. • Nova High School
Major: Management

2016-17 (Junior Season)

Appeared in all 30 games, making one start...Shot 38.8 percent overall from the field, including a team-best 41.0 percent from three-point range, which ranked sixth in the Patriot League...Shot 81.4 percent from the free throw line and tied for third on the team with 36 assists...Scored 10 points in the season-opener against East Stroudsburg (11/11)...Scored nine points with three steals against Delaware State (11/16)...Tallied 11 points on 4-of-6 shooting at California (12/11)...Registered 13 points against Army West Point (12/30)...Had 12 points and three rebounds with four three-pointers against Navy (1/18)...Tallied 11 points and was 3-for-3 from beyond the arc at Lafayette (1/21)...Scored 13 points in a win over Loyola (2/1)...Netted 13 points on 5-of-6 shooting in a win over Colgate (3/1)...Named to the Patriot League Academic Honor Roll.

2015-16 (Sophomore Season)

Saw action in all 31 games as a sophomore...scored a career-best 12 points against Colgate (2/24)...added 11 points at American (2/6)...tied her career high with 11 points at Loyola (2/3) including a clutch 4-for-4 showing from the free throw line in the final minute to secure a 76-68 victory for the Mountain Hawks...scored 11 points behind a 3-for-5 showing from downtown at Bucknell (1/13)...dished three assists vs. American (1/9)...tallied a career-best seven points at Boston University (1/2)...scored five points in the season-opener at Monmouth (11/13).

2014-15 (Freshman Season)

Saw action in 20 games...hit a pair of big three-pointers in the second half against Eastern Illinois (12/21) to record a career-high six points and help Lehigh to a 72-69 win...drained a three-pointer at NJIT (11/21)...scored her first career points against ESU (11/17).

BEFORE LEHIGH

Devaney led her Nova High School team to two State Final Four Appearances, as well as a pair of district and regional titles, and an overall record of 93-22 during her four years... scored 1,372 points as a four-year varsity player and ranks in the top three all-time scorers in Nova history... was twice named to the Sun Sentinel's 8A-7A-6A All-County First Team and was also selected as the Player of the Year in 2012-13...played for the South Florida Lady Jags AAU team and also spent four years on the cross country team and two years as a member of the track team...nominated as the Broward County Scholar Athlete of the Year and holds a strong GPA of 3.78.



Devaney's Career Statistics

Devanny's Career Statistics																				
Season	opp	min	Total		3-Point		F-Throw		Rebound				pf	fo	ast	to	blk	stl	Scoring	
			fg	pts	fg	pts	ft	pts	off	def	tot	avg							pts	avg
2014-15	20-8	79/40.0	8-30	.267	7-27	.259	8-0	.000	1	3	4	0.2	4	0	1	2	8	1	23	1.2
2015-16	31-8	477/75.4	30-85	.353	20-63	.317	23-27	.852	3	21	24	0.8	38	0	38	28	1	12	183	3.3
2016-17	30-1	515/77.2	54-128	.388	34-83	.410	35-43	.814	6	23	29	1.8	35	0	36	30	4	18	177	5.9
2017-18	10-1	188/78.0	20-56	.357	15-36	.417	5-6	.833	1	9	10	1.0	9	0	13	12	8	3	68	6.8
TOTAL	91-1	1251/73.7	112-310	.361	76-199	.382	63-76	.829	11	56	67	0.7	78	0	83	73	5	34	362	4.0

2017-18 Game-By-Game:

Opponent	Pts.	Rbs.	Ast.
at Minnesota	4	0	1
at Monmouth	3	1	1
at Villanova	0	1	3
at Cornell	5	1	1
MANSFIELD	5	2	2
FAIRFIELD	0	2	1
LA SALLE	3	0	0
MT. ST. MARY'S	20	1	1
at Sacred Heart	12	2	1
NJIT	8	0	2
at LIU Brooklyn			
LAFAYETTE			
NAVY			
at Holy Cross			
BOSTON U.			
BUCKNELL			
at American			
at Colgate			
ARMY			
at Loyola			
at Navy			
at Boston U.			
at Bucknell			
AMERICAN			
COLGATE			
at Army			
LOYOLA			
at Lafayette			
HOLY CROSS			

* game started



#11 Emily Johnson

Forward • Freshman • 6-1
Franklin Square, N.Y. • Archbishop Molloy
Major: Arts and Sciences

BEFORE LEHIGH

All-New York City Honorable Mention as a junior in 2015-16 while playing for Archbishop Molloy High School... She Got Game Classic MVP as a junior... Two-time Rose Classic Super Jam Scholar Athlete Award recipient... USJN U17 All-Star in 2015 as a sophomore... Missed most of her senior year due to injury... Named to the Principal's List as a sophomore, junior and senior.

GETTING TO KNOW EMILY

Nickname: Em

Why did you choose Lehigh?: Lehigh has a perfect balance between competitive athletics and challenging academics all taking place on a beautiful campus. It seemed like a university that would supply me with the skills that I need for years **after college**.

What's your favorite thing about Lehigh?: The community. The people here at Lehigh feel like family; everyone looks out for one another.

Thoughts on Lehigh Coaching Staff (Coach Sue Troyan): The first time I spoke to Coach Troyan, I could tell she cared about more than just basketball. Coach always makes sure that I am excelling on and off the court. On the basketball side of things, Coach Troyan is an experienced coach who knows what she's doing.

Major & Why: Finance With a Minor in Actuarial Science. This major/minor combination will leave me set after my years at Lehigh. Actuaries are a part of high level business decision making and solve real problems in the world. Being an actuary allows you to have a low-stress, highly desired work/life balance with a rewarding salary.

Favorite Place on Campus: Lehigh Lookout

Favorite Food: Asian

Favorite Color: Blue

Favorite Musical Artist: PnB Rock

Favorite Movie: Love & Basketball

Favorite TV Show: The Get Down

Favorite Website: Twitter, Amazon, Netflix

Favorite Pro Team: LA Clippers

Favorite Athlete in Another Sport: Odell Beckham Jr.

Favorite Place to Study: My room

Hobbies: Shopping, Sleeping, Netflix

Most Admired Person & Why: My parents because they are hardworking, talented people

Magazine Cover I'd Like To Be On: GQ

Place I'd Like To Visit: Jamaica

Dream Job: Actuary

If I Didn't Play Basketball I'd Play: Soccer

If I Had \$1 Billion, I Would: Go on a shopping spree

2017-18 Game-By-Game:

Opponent	Pts.	Rbs.	Ast.
at Minnesota	-	-	-
at Monmouth	-	-	-
at Villanova	-	-	-
at Cornell	-	-	-
MANSFIELD	-	-	-
FAIRFIELD	-	-	-
LA SALLE	-	-	-
MT. ST. MARY'S	-	-	-
at Sacred Heart	-	-	-
NJIT	-	-	-
at LIU Brooklyn	-	-	-
LAFAYETTE	-	-	-
NAVY	-	-	-
at Holy Cross	-	-	-
BOSTON U.	-	-	-
BUCKNELL	-	-	-
at American	-	-	-
at Colgate	-	-	-
ARMY	-	-	-
at Loyola	-	-	-
at Navy	-	-	-
at Boston U.	-	-	-
at Bucknell	-	-	-
AMERICAN	-	-	-
COLGATE	-	-	-
at Army	-	-	-
LOYOLA	-	-	-
at Lafayette	-	-	-
HOLY CROSS	-	-	-

* game started





#12 Gena Grundhoffer

Forward • Sophomore • 6-1
Wisconsin Rapids, Wisc. • Assumption
Major: Business

2016-17 (Freshman Season)

Appeared in all 30 games, making 29 starts...Ranked second on the team and third in the Patriot League with an 82.8 free throw percentage...Finished second on the team with 9.9 points and led the squad with 4.7 rebounds per game...Ranked among the team's leaders in field goal percentage at 39.5 percent and was second on the team by shooting 82.8 percent at the free throw line...Ranked second on the team with 23 steals and 45 assists...Third on the team with 26.5 minutes per game...Scored in double figures on 13 occasions...Had 15 points and nine rebounds in her collegiate debut against East Stroudsburg (11/11)...Scored 17 points in a win over Delaware State (11/16), then registered a double-double with 19 points and 11 rebounds, and added three assists and two steals against Sacred Heart (11/19) en route to being named the Patriot League Rookie of the Week...Had 17 points and nine rebounds against Monmouth (11/27)...Scored 17 points on 7-of-12 shooting at American (1/7)...Tallied 17 points and nine rebounds in a win at Lafayette (1/21)...Scored a season-high 20 points on 7-of-9 shooting with a pair of threes against Holy Cross (2/11)...Totaled 17 points and nine rebounds in the regular season finale against Colgate (3/1)...Named to the Patriot League Academic Honor Roll.

BEFORE LEHIGH

Helped lead Assumption High School to two state championships and two second-place finishes throughout her career...Earned state tournament MVP honors in 2016 after guiding her squad to a state championship title...Set new state tournament records for most points scored in a single game and most points scored in the tournament in 2016...Conference Player of the Year honors as both a junior and a senior...Finished her career with 1,815 points while guiding her team to a four-year record of 104-12...Member of the National Honor Society and was named to high honor roll throughout her high school career.



2017-18 Game-By-Game:

Opponent	Pts.	Rbs.	Ast.
at Minnesota*	6	3	2
at Monmouth*	16	5	1
at Villanova*	4	7	0
at Cornell*	14	3	2
MANSFIELD*	4	3	0
FAIRFIELD*	13	3	0
LA SALLE*	4	0	0
MT. ST. MARY'S*	12	2	4
at Sacred Heart*	18	13	1
NJIT*	12	6	0
at LIU Brooklyn			
LAFAYETTE			
NAVY			
at Holy Cross			
BOSTON U.			
BUCKNELL			
at American			
at Colgate			
ARMY			
at Loyola			
at Navy			
at Boston U.			
at Bucknell			
AMERICAN			
COLGATE			
at Army			
LOYOLA			
at Lafayette			
HOLY CROSS			

* game started

Grundhoffer's Career Statistics

Season	gp	pts	min	Total		3-Point		F-Throws		Rebounds				Assists				Steals			
				fg	pts	fg	pts	fg	pts	off	tot	tot	avg	pt	tot	tot	avg	st	tot		
2016-17	30-29	796	26.5	181-256	.895	14-29	.358	82-99	.828	50	92	142	4.7	71	2	45	74	7	23	288	9.9
2017-18	10-10	257	25.7	48-117	.842	5-21	.238	18-22	.818	12	33	45	4.5	18	0	10	26	5	4	183	18.3
TOTAL	40-39	1053	26.3	141-373	.878	19-50	.377	100-121	.825	62	125	187	4.7	89	2	55	100	12	27	471	10.0



#13 Meagan Eripret

Center • Junior • 6-3
Allentown, Pa. • Salisbury
Major: English

2016-17 (Sophomore Season)

Appeared in 23 games and made three starts...Shot 43.9 percent (18-for-41) from the field...Had two steals against Sacred Heart (11/19)...Totaled seven points and four rebounds against NJIT (11/30)...Had six points, five rebounds and three blocks at Bucknell (1/11)...Registered season highs of 11 points and eight rebounds in the First Round of the Patriot League Tournament at Loyola (3/4)...Named to the Patriot League Academic Honor Roll.

2015-16 (Freshman Season)

Sidelined for the season due to injury...named to the Patriot League Academic Honor Roll.

BEFORE LEHIGH

Meagan Eripret, a local product from Allentown, Pa. is the all-time leading scorer at Salisbury High School with 1,788 career points. The 6-3 center was named the team MVP for all four years of her career and was a three-time first team All-Colonial League selection and two-time first team All-Area member. Eripret was also a two-time All-State honoree, including collecting first team honors as a junior. In addition to her strong high school career, Eripret also played four years with the Lehigh Valley Fever and one year with the Philadelphia Comets club teams. Impressive in the classroom as well, Eripret graduated 11th in her class, was a member of the National Honor Society and earned the President's Award for Educational Excellence.

2017-18 Game-By-Game:

Opponent	Pts.	Rbs.	Ast.
at Minnesota	0	0	0
at Monmouth	0	2	0
at Villanova	3	1	1
at Cornell	0	0	0
MANSFIELD	7	5	0
FAIRFIELD	-	-	-
LA SALLE	2	1	0
MT. ST. MARY'S	4	1	0
at Sacred Heart	0	0	0
NJIT	4	1	0
at LIU Brooklyn			
LAFAYETTE			
NAVY			
at Holy Cross			
BOSTON U.			
BUCKNELL			
at American			
at Colgate			
ARMY			
at Loyola			
at Navy			
at Boston U.			
at Bucknell			
AMERICAN			
COLGATE			
at Army			
LOYOLA			
at Lafayette			
HOLY CROSS			

* game started



Eripret's Career Statistics

Season	opp	games	Total		3-Point		F-Throws		Rebounds				Assists				Steals			
			fg	pts	fg	pts	at	pts	off	def	tot	avg	pf	to	ast	tot	avg			
2016-17	23-3	155	18-41	439	0-0	0	18-18	566	17	27	44	1.9	18	0	3	10	18	3	46	2.0
2017-18	9-0	63	9-19	474	0-2	2	2-4	500	2	9	11	1.2	5	0	1	7	6	1	29	2.2
TOTAL	32-3	218	27-60	450	0-2	2	12-22	545	19	36	55	1.7	23	0	4	17	16	4	65	2.1



#14 Paige Galiani

Guard • Sophomore • 5-10
Great Falls, Va. • Langley
Major: Business

2016-17 (Freshman Season)

Appeared in 18 games...Shot 41.2 percent (7-for-17) from the field and 38.5 percent (5-for-13) from three-point range...Tallied five points, one assist and one rebound at Boston University (1/28)...Scored a season-high six points at Navy on 2-of-4 shooting (2/15)...Named to the Patriot League Academic Honor Roll.

BEFORE LEHIGH

Graduated as the all-time leading scorer at Langley High School in McLean, Va. with 1,443 career points...Named a two-time Virginia 6A All-State and Washington Post All-Met selection...Named the conference player of the year as a senior and finished her career as a three-time all-conference pick...A four-year varsity starter, and three-year team captain...Three-time team MVP who led Langley to its first conference championship since 1988 and its first state championship final in the school's 50-year history...Finished her junior and senior seasons as one of the top three-point shooters in the DC Metro area...Selected as Langley's Co-Female Athlete of the Year along with Lehigh volleyball player Jessica Donaldson...Played AAU ball for the PSPA Rams...Graduated with a 3.97 GPA.

2017-18 Game-By-Game:

Opponent	Pts.	Rbs.	Ast.
at Minnesota	3	0	0
at Monmouth	0	0	0
at Villanova	5	1	0
at Cornell	-	-	-
MANSFIELD	6	0	2
FAIRFIELD	-	-	-
LA SALLE	0	0	0
MT. ST. MARY'S	-	-	-
at Sacred Heart	-	-	-
NJIT	0	1	0
at LIU Brooklyn			
LAFAYETTE			
NAVY			
at Holy Cross			
BOSTON U.			
BUCKNELL			
at American			
at Colgate			
ARMY			
at Loyola			
at Navy			
at Boston U.			
at Bucknell			
AMERICAN			
COLGATE			
at Army			
LOYOLA			
at Lafayette			
HOLY CROSS			

* game started



Galiani's Career Statistics

Season			Total		3-Point		F-Throws		Rebounds				Assists					Scoring	
			fg	pts	fg	pts	fg	pts	off	def	tot	avg	pf	to	ast	tot	avg	pts	avg
2016-17	18-0	292.2	7-17	412	5-13	385	4-7	571	3	2	5	0.3	2	0	1	1	1	23	1.3
2017-18	6-0	213.5	5-10	500	4-8	588	8-2	800	2	8	2	0.3	3	0	2	1	1	14	2.3
TOTAL	24-0	505.7	12-27	444	9-21	423	4-9	444	5	2	7	0.3	5	0	3	2	2	37	1.5



#15 Camryn Buhr

Guard • Sophomore • 6-1

Mishawaka, Ind. • Penn

Major: Arts and Sciences

2016-17 (Freshman Season)

Appeared in all 30 games, making 27 starts...Ranked third on the team with 7.0 points and 4.4 rebounds per game...Led the team with 13 blocks and was third with 21 steals...Shot 36.7 percent (79-for-215) from the field...Scored seven points in her collegiate debut against East Stroudsburg (11/11)...Totaled 10 points, nine rebounds and two blocks at American (1/7)...Had 15 points, eight rebounds and two steals against Navy (2/18)...Scored 11 points on 5-of-10 shooting with six rebounds in a win at Lafayette (1/21)...Registered 12 points and nine rebounds at Boston University (1/28)...Totaled 13 points, eight rebounds and one steal and shot 4-for-7 overall in a win at Holy Cross (2/11)...Scored eight points on 3-of-6 shooting and added eight rebounds in a win over Lafayette (2/18)...Named to the Patriot League Academic Honor Roll.

BEFORE LEHIGH

Helped lead Penn High School to its first-ever state championship as a senior in 2016...Three-time all-state selection...Finished her senior season averaging 19.5 points and 7.2 rebounds per game while shooting 51 percent from the field...Named to the 2016 Indiana All-Star Team...Finished her high school career with 1,479 points and a school-record 702 career rebounds...Helped Penn to a 94-14 record over her four years...Graduated in the top 10 percent of her class and landed on Dean's High Honor Roll for all semesters of her high school career.

2017-18 Game-By-Game:

Opponent	Pts.	Rbs.	Ast.
at Minnesota*	7	7	3
at Monmouth*	16	9	2
at Villanova*	8	6	1
at Cornell*	9	7	3
MANSFIELD*	15	11	0
FAIRFIELD*	22	5	0
LA SALLE*	10	4	1
MT. ST. MARY'S*	8	6	5
at Sacred Heart*	13	7	1
NJIT*	7	6	3
at LIU Brooklyn			
LAFAYETTE			
NAVY			
at Holy Cross			
BOSTON U.			
BUCKNELL			
at American			
at Colgate			
ARMY			
at Loyola			
at Navy			
at Boston U.			
at Bucknell			
AMERICAN			
COLGATE			
at Army			
LOYOLA			
at Lafayette			
HOLY CROSS			

* game started



Buhr's Career Statistics

Season	opp		minutes	Total		3-Point		F-Throws		Rebounds				Assists				Stealing						
	g	pts		fg	pts	fg	pts	ft	pts	off	def	tot	avg	pf	to	ast	blk	stl	pts	avg				
2016-17	30	27	653/21.8	79	215	.367	9	45	.200	44	65	.677	45	46	131	4.4	28	3	22	55	13	21	211	7.0
2017-18	10	11	385/30.9	44	104	.423	4	13	.308	23	30	.767	23	45	68	6.8	28	0	19	23	6	7	115	11.5
TOTAL	40	37	1038/28.1	123	319	.385	13	58	.224	67	95	.705	68	131	199	5.0	56	3	41	78	19	28	326	8.2



#20 Quinci Mann

Guard • Senior • 5-10
San Francisco, Calif. • St. Ignatius Prep
Major: Political Science

2016-17 (Junior Season)

Appeared and started in 29 games...Named Third Team All-Patriot League...Ranked third in the Patriot League overall in scoring (15.4), second in free throw percentage (85.2), and fourth in three-point field goals made per game (2.0)...Tied for the Patriot League lead during the regular season with 11 games of scoring at least 20 points...Finished the season 34th in the nation in free throw percentage (85.2)...Led Lehigh in minutes (29.8)...Ranked third on the team with 36 assists (1.2 apg)...Hauled in 3.2 rebounds per game...Scored at least 21 points in each of the first three games of the season, including a 3-for-5 performance from three-point range against Delaware State on 11/16...Scored 23 points on 7-of-18 shooting with four three-pointers at California (12/11)...Collected 16 points and six rebounds on 6-of-13 shooting at Loyola (1/5)...Had a season-high eight rebounds against Navy (1/18)...Set a new career-high with 26 points against Loyola on Feb. 1, and set a new Lehigh program record with 16 made free throws after going a perfect 16-for-16 from the free throw line. The 16 made free throws was the second most in the Patriot League for a single game during the season and tied for ninth most in the country. It was also tied for the most makes in the nation without a miss in one game all season...Scored 23 points on 8-of-15 shooting and 4-of-7 from beyond the arc in a win over Holy Cross (2/11)...Netted 23 points at Colgate, while shooting 8-for-16 overall with a new career-best five three pointers (2/22)...Named to the Preseason All-Patriot League Team...Named to the Patriot League Academic Honor Roll.

2015-16 (Sophomore Season)

Named Second Team All-Patriot League after averaging 13.3 points per game and draining a team-best 58 three-pointers...led the team with 73 assists, a .430 three-point field goal percentage and .823 free throw percentage that ranked second best in the Patriot League...tallied a team-best 15 points in the Patriot League Semifinals at Army (3/11)...chipped in 19 points and a season-best five assists against Colgate (2/24)...scored 19 points in a big win at Lafayette (2/20)...led the team with 16 points against American (2/6)...scored a career-best 24 points behind a 9-for-14 showing from the field against Boston University (1/30)...strung together an 11-game double-digit scoring streak from Dec. 2 to Jan. 20...tossed in 18 points behind a 7-for-13 showing from the field at Bucknell (1/13)...scored a team-best 21 points at Hampton to go along with four assists (12/20)...led Lehigh with 20 points against Saint Joseph's (12/2) and a career-best 23 points at Illinois (12/6)...tallied 21 points in the season opener at Monmouth (11/13)...named to the Patriot League Academic Honor Roll.

2014-15 (Freshman Season)

Strong rookie campaign in which she was named to Patriot League All-Rookie team... scored in double-figures in 12 games and started all 31 games...tied her career high with 16 points on 7-of-12 shooting to help lift Lehigh to a semifinal victory over Army (3/9)...scored 12 points in the Patriot League Quarterfinals at Holy Cross (3/6)...registered 16 points at Lafayette, 14 of which came in the second half...tallied 11 points, two rebounds and a career-high six assists in a big win over Bucknell (1/28)...led the team with 15 points, all of which came in the second half, in a win over rival Lafayette (1/25)...totaled ten points, two rebounds and an assist against Boston University (1/3)...tallied 11 points and three assists against Duquesne (12/28)...posted a team-best 14 points at St. Joe's (12/4), including the game-winning layup with 4.4 seconds to play, while also pulling down five rebounds to be named Patriot League Rookie of the Week...kicked off the season with an impressive 16-point performance at Monmouth (11/15), while also contributing five assists to earn Patriot League Rookie of the Week recognition.

BEFORE LEHIGH

Mann was the leading scorer on a St. Ignatius College Preparatory team that was home to a talented roster of five Division I NCAA scholarship eligible student-athletes... helped lead St. Ignatius to CIF NorCal finals in 2013 and a West Coast Athletic League championship in 2014 as a two-time first team All-League player... also a starter on the Cal Stars Nike Elite AAU team that finished second at Nike Nationals, the most prestigious AAU Tournament held each summer... strong in the classroom as well as a member of her school's honor roll with a weighted GPA of 3.85.

2017-18 Game-By-Game:

Opponent	Pts.	Rbs.	Ast.
at Minnesota*	10	4	2
at Monmouth*	24	2	0
at Villanova*	1	2	0
at Cornell*	19	4	3
MANSFIELD*	18	5	1
FAIRFIELD*	6	1	0
LA SALLE*	17	0	1
MT. ST. MARY'S*	20	1	4
at Sacred Heart*	0	1	5
NJIT*	15	4	2
at LIU Brooklyn			
LAFAYETTE			
NAVY			
at Holy Cross			
BOSTON U.			
BUCKNELL			
at American			
at Colgate			
ARMY			
at Loyola			
at Navy			
at Boston U.			
at Bucknell			
AMERICAN			
COLGATE			
at Army			
LOYOLA			
at Lafayette			
HOLY CROSS			

* game started

Mann's Career Statistics

Season	Opponent	min	Total		3-Point		F-Throws		Rebounds				Assists				Points	
			fg	pts	fg	pts	fg	pts	off	def	tot	avg	pf	to	ast	tot	pts	avg
2014-15	31-31	719:23.2	51-251	.363	27-94	.287	39-48	.813	11	41	52	1.7	31	0	47	74	2	12
2015-16	31-31	823:28.0	145-368	.394	58-135	.430	65-79	.823	12	37	49	1.6	47	0	73	117	1	13
2016-17	29-29	865:29.8	148-408	.364	58-189	.307	92-108	.852	14	78	92	3.2	48	0	36	65	5	15
2017-18	10-10	255:29.5	44-108	.404	16-50	.320	26-34	.765	2	22	24	2.4	13	0	18	23	3	7
TOTAL	101-101	2748:27.2	429-1137	.377	159-469	.340	222-269	.825	39	178	217	2.1	131	0	174	279	11	51





#22 Hannah Hedstrom

Guard • Sophomore • 5-9
Minnetonka, Minn. • Minnetonka
Major: Biology

2016-17 (Freshman Season)

Appeared in all 30 games, making 29 starts...Led Lehigh and ranked tied for third in the Patriot League with 3.5 assists per game...Averaged 4.4 points and 4.0 rebounds per game...Her 28 minutes per game ranked second on the team...Tallied nine assists in a win over Delaware State on Nov. 16, which was tied for the second most assists in a game in the Patriot League all season...Scored a season-high 14 points on 6-of-11 shooting at Mount St. Mary's (11/22)...Collected six assists and three steals against Army (12/30)...Totaled eight points, seven assists, six rebounds and two steals against Navy (1/18)...Scored 11 points on 5-of-8 shooting in a win at Lafayette (1/21)...Had six points, seven rebounds and seven assists in a win over Loyola (2/1)...Collected a season-high nine rebounds against American (2/4)...Named to the Patriot League Academic Honor Roll.

BEFORE LEHIGH

A Prospect Nation four-star recruit out of Minnetonka (Minn.) High School...Led Minnetonka to a 2016 state championship and earned a spot on the state championship All-Tournament team...Three-time all-conference honoree and two-year team captain...Graduated as the school's career and single-season record holder for assists...Following the 2016 state championship, Minnetonka finished the season ranked 18th in the country in the ESPN rankings...Named a National AP Scholar, Academic All-State and graduated summa cum laude with a 4.0 unweighted GPA through seven semesters.

2017-18 Game-By-Game:

Opponent	Pts.	Rbs.	Ast.
at Minnesota*	12	7	2
at Monmouth*	2	9	3
at Villanova*	4	6	0
at Cornell*	2	2	2
MANSFIELD*	2	4	12
FAIRFIELD*	4	7	6
LA SALLE*	13	5	3
MT. ST. MARY'S*	2	4	6
at Sacred Heart*	2	6	3
NJIT*	4	2	4
at LIU Brooklyn			
LAFAYETTE			
NAVY			
at Holy Cross			
BOSTON U.			
BUCKNELL			
at American			
at Colgate			
ARMY			
at Loyola			
at Navy			
at Boston U.			
at Bucknell			
AMERICAN			
COLGATE			
at Army			
LOYOLA			
at Lafayette			
HOLY CROSS			

* game started



Hedstrom's Career Statistics

Season	gp-gs	minutes	Total		3-Point		F-Throws		Rebounds				Points				Shooting			
			fg-fga	pts	fg-fga	pts	ft-fa	pts	off	def	tot	avg	pts	fg	ft	ast	blk	stl	pts	avg
2016-17	30-29	848/28.0	49-125	.392	7-26	.269	27-51	.529	16	103	119	4.0	88	2	104	79	6	33	132	4.4
2017-18	10-10	302/30.2	16-38	.421	0-6	.000	15-28	.536	6	46	52	5.2	30	1	41	33	3	10	47	4.7
TOTAL	40-39	1142/28.6	65-163	.399	7-32	.219	42-79	.532	22	149	171	4.3	118	3	145	112	9	43	179	4.5



#23 Ann-Marie Jacobs

Guard • Freshman • 5-11
Clyde Hill, Wash. • Bellevue
Major: Business

BEFORE LEHIGH

Four year letterwinner at Bellevue High School...First Team All-KingCo Athletic Conference (3A) selection as a senior in 2016-17 and an honorable mention pick as a junior...Helped lead the team to four state tournament appearances and a combined record of 97-17...Led the team as a senior in points (266), three-point percentage (40 percent) and free throws (80 percent)...As a junior, she helped lead Bellevue to a 3A state championship title with a perfect 29-0 record, finishing with a MaxPreps national ranking of No. 6 and MaxPreps Xcellent Ranking of No. 4...Graduated with honors.

GETTING TO KNOW ANN-MARIE

Nickname: Ams or A-M

Why did you choose Lehigh?: I chose Lehigh because it was a school that was going to challenge me academically and athletically and the campus was beautiful.

What's your favorite thing about Lehigh?: Lehigh has the perfect balance of sports, academics, and social life. I really feel as though everyone cares about me as an individual here and the energy and spirit about the school is amazing!

Thoughts on Coaching Staff: They know how to push me and encourage me to be the best person I can be on and off the court

Major: Finance because it is a versatile major that opens up a variety of good job opportunities.

Favorite Place on Campus: The Library

Favorite Food: Phad Thai

Favorite Color: Pink

Favorite Music Artist: Chance the Rapper

Favorite Movie: The Goonies

Favorite TV Show: Game of Thrones

Favorite Website: Sephora.com

Favorite Sports Broadcaster: Shaq

Favorite Pro Team: Clippers

Favorite Athlete in Another Sport: Lolo Jones

Favorite Place to Study: The Library

Favorite Thing to do on a Rainy Day: Read a book

Most Admired Person and Why: My college advisor throughout high school because he never failed to stop believing in me and he's helped countless kids accomplish their goals of college while showing them how to become the best person they can be

Hobbies: Hiking, shopping, hanging with friends

Biggest Sports Accomplishment: Winning the state championship in 2016

Magazine cover I would like to be on: Forbes

Place is like to visit: Tahiti

Talent I'd most like to have: Being able to play any sport and be good at it

Dream Job: A job in the cosmetic and fashion industry

One unique thing no one know about me: I've lived in four different cities across the country

If I Didn't Play Basketball I Would Play: Volleyball

If I had \$1 Billion, I Would: Ensure my family is set for life and donate a portion to charity

2017-18 Game-By-Game:

Opponent	Pts.	Rbs.	Ast.
at Minnesota	-	-	-
at Monmouth	-	-	-
at Villanova	-	-	-
at Cornell	-	-	-
MANSFIELD	-	-	-
FAIRFIELD	-	-	-
LA SALLE	-	-	-
MT. ST. MARY'S	-	-	-
at Sacred Heart	-	-	-
NJIT	-	-	-
at LIU Brooklyn	-	-	-
LAFAYETTE	-	-	-
NAVY	-	-	-
at Holy Cross	-	-	-
BOSTON U.	-	-	-
BUCKNELL	-	-	-
at American	-	-	-
at Colgate	-	-	-
ARMY	-	-	-
at Loyola	-	-	-
at Navy	-	-	-
at Boston U.	-	-	-
at Bucknell	-	-	-
AMERICAN	-	-	-
COLGATE	-	-	-
at Army	-	-	-
LOYOLA	-	-	-
at Lafayette	-	-	-
HOLY CROSS	-	-	-

* game started





#24 Bryce Menendez

Forward • Junior • 6-2
Naperville, Ill. • Neuqua Valley
Major: Bioengineering

2016-17 (Sophomore Season)

Appeared in 23 games...Shot 83.3 percent from the free throw line...Had six points on 2-of-3 shooting along with two rebounds against Norfolk State (11/26)...Scored six points on 3-of-3 shooting at Army (2/25).

2015-16 (Freshman Season)

Missed a majority of the season due to illness...Saw action in six games...Recorded a rebound against Army (2/27)...Saw first career action against Boston U. (1/30).

BEFORE LEHIGH

Bryce Menendez, a 6-2 forward, will come to Lehigh from Naperville, Ill. where she helped lead her Neuqua Valley High School team to a conference championship through all four years of her career in addition to a sectional championship in 2014. She earned Conference Player of the Year and All-Area honors for her efforts and earned second team All-State honors during her senior season. Menendez also helped lead her Illinois Elite AAU team to a second place finish at Nationals in 2014 and back-to-back Illinois AAU State Championships in 2014 and 2015. Off the court, Menendez earned high honor roll status during all four years of her high school career and was named an Indian Prairie Scholar.

2017-18 Game-By-Game:

Opponent	Pts.	Rbs.	Ast.
at Minnesota	-	-	-
at Monmouth	-	-	-
at Villanova	-	-	-
at Cornell	-	-	-
MANSFIELD	-	-	-
FAIRFIELD	-	-	-
LA SALLE	-	-	-
MT. ST. MARY'S	-	-	-
at Sacred Heart	-	-	-
NJIT	-	-	-
at LIU Brooklyn	-	-	-
LAFAYETTE	-	-	-
NAVY	-	-	-
at Holy Cross	-	-	-
BOSTON U.	-	-	-
BUCKNELL	-	-	-
at American	-	-	-
at Colgate	-	-	-
ARMY	-	-	-
at Loyola	-	-	-
at Navy	-	-	-
at Boston U.	-	-	-
at Bucknell	-	-	-
AMERICAN	-	-	-
COLGATE	-	-	-
at Army	-	-	-
LOYOLA	-	-	-
at Lafayette	-	-	-
HOLY CROSS	-	-	-

* game started



Menendez's Career Statistics

Season	opp	minutes	Total		3-Point		F-Throws		Rebounds				Shooting					Shooting		
			fg	pts	fg	pts	ft	pts	off	def	tot	avg	pf	fo	ast	tot	pts	avg		
2015-16	6-0	77.2	0-1	.000	0-1	.000	0-0	.000	0	1	1	0.2	1	0	0	0	0	0.0		
2016-17	23-0	1114.4	7-27	.259	0-0	.000	5-6	.833	7	9	16	0.7	11	0	2	4	1	2	19	0.8
TOTAL	29-0	1191.6	7-28	.250	0-1	.000	5-6	.833	7	10	17	0.6	9	0	2	4	1	2	19	0.7



#25 Mary Clougherty

Guard • Freshman • 6-0
Herndon, Va. • Chantilly
Major: Business

BEFORE LEHIGH

Athletic: Four year starter for Chantilly High School...First Team 6A All-State selection as a senior...2017 Regional Player of the Year (6A North)...All-Met Player of the Year in 2017...Two-time First Team All-Met selection...Washington Post All-Met Fourth Team selection as senior...Second Team 6A All-Region pick as a freshman and was also a Honorable Mention All-Conference selection as a freshman...Named the school's Senior Female Athlete of the Year in 2017...Team captain as a junior and senior...Three-time team MVP...Member of the Fairfax Stars AAU team that captured a Nike EYBL National Championship in 2015.

Academic: Maintained a cumulative 4.0 GPA...Served as a class officer for all four years...Captain of the state championship Forensics Team as a junior and senior...National Honor Society member and officer on the English Honor Society...Three-time Character Award recipient and four-time winner of the Charger Outstanding Achievement Award.

2017-18 Game-By-Game:

Opponent	Pts.	Rbs.	Ast.
at Minnesota	3	4	3
at Monmouth	0	1	1
at Villanova	3	2	0
at Cornell	3	1	0
MANSFIELD	5	2	1
FAIRFIELD	0	1	1
LA SALLE	2	1	1
MT. ST. MARY'S	3	2	0
at Sacred Heart	0	0	0
NJIT	3	1	0
at LIU Brooklyn			
LAFAYETTE			
NAVY			
at Holy Cross			
BOSTON U.			
BUCKNELL			
at American			
at Colgate			
ARMY			
at Loyola			
at Navy			
at Boston U.			
at Bucknell			
AMERICAN			
COLGATE			
at Army			
LOYOLA			
at Lafayette			
HOLY CROSS			

* game started

GETTING TO KNOW MARY

Why did you choose Lehigh?: I chose Lehigh because the team environment made me feel at home and the great academic opportunities it has to offer.

What's your favorite thing about Lehigh?: My favorite thing about Lehigh is the beautiful campus nestled in the mountains.

Thoughts on Lehigh Coaching Staff (Coach Sue Troyan): I absolutely love Coach Troyan. She's like a mom to me.

Major & Why: Business information systems and finance because I like math and working with people.

Favorite Place on Campus: Linderman Library

Favorite Color: Purple

Favorite Movie: The Imitation Game

Favorite TV Show: Psych

Favorite Website: ESPN

Favorite Pro Team: Pittsburgh Steelers

Favorite Athlete In Another Sport: Sydney Crosby

Favorite Quote: "Darkness cannot drive out darkness: only light can do that. Hate cannot drive out hate, only love can do that." -Martin Luther King Jr.

Favorite place to study: Linderman Library

Favorite thing to do on a rainy day: Run out in the rain

Hobbies: Reading, juggling, playing board games.

Most admired person and why: My mom because she is the most strong enduring person I know

Magazine Cover I'd Like To Be On: Forbes

Place I'd Like To Visit: Rome

Talent I'd Most Like To Have: Be able to sing

Dream Job: CFO of Tesla

If I Didn't Play Basketball, I Would Play: Soccer

If I Had \$1 Billion, I Would: Build an orphanage in China



Clougherty's Career Statistics

Season	gp	pts	Total		3-Point		F-Throws		Rebounds				Assists						Steals	
			fg	pts	fg	pts	fg	pts	off	def	tot	avg	pf	to	ast	tot	blk	stl	pts	avg
2017-18	10-11	91.8-1	4-25	30.0	6-18	33.3	8-0	.000	2	13	15	1.5	5	0	7	1	1	1	22	2.2
TOTAL	10-11	91.8-1	4-25	30.0	6-18	33.3	8-0	.000	2	13	15	1.5	5	0	7	1	1	1	22	2.2



#30 Cameryn Benz

Forward • Sophomore • 6-3
Montgomery, N.J. • Montgomery
Major: Business

2016-17 (Freshman Season)

Appeared in all 30 games...Averaged 4.5 points and 3.7 rebounds in 13.4 minutes per game...Ranked second on the team with 11 total blocks...Shot 37.0 percent from the field (47-of-127)...Had five games of scoring in double figures...Had 11 points, seven rebounds and two steals against Delaware State (11/16)...Tallied 10 points and seven rebounds against Sacred Heart (11/19)...Scored 12 points on 5-of-8 shooting and added six rebounds against Rider (12/8)...Collected 11 points and six rebounds against Army (12/30)...Finished with 12 points and six rebounds on 4-of-8 shooting at Navy (2/15).

BEFORE LEHIGH

Graduated as Montgomery High School's all-time leading scorer (1,593) and rebounder (939)...Became the youngest player in school history to reach the 1,000 point milestone...Recorded 40 double-doubles throughout her high school career...Finished her senior season averaging 20.8 points and 11.5 rebounds per game...Earned All-Conference and All-Area honors in all four years of her career...Named the Princeton Packet Player of the Year in 2015...Member of the National Honor Society...Named to the honor roll during every year of high school career...Earned the Montgomery High School's Good Citizenship Award.

2017-18 Game-By-Game:

Opponent	Pts.	Rbs.	Ast.
at Minnesota	10	4	1
at Monmouth	7	8	0
at Villanova	14	7	2
at Cornell	2	2	0
MANSFIELD	10	6	0
FAIRFIELD	2	3	0
LA SALLE	8	5	0
MT. ST. MARY'S	2	5	1
at Sacred Heart	4	4	0
NJIT	2	5	0
at LIU Brooklyn			
LAFAYETTE			
NAVY			
at Holy Cross			
BOSTON U.			
BUCKNELL			
at American			
at Colgate			
ARMY			
at Loyola			
at Navy			
at Boston U.			
at Bucknell			
AMERICAN			
COLGATE			
at Army			
LOYOLA			
at Lafayette			
HOLY CROSS			

* game started



Benz's Career Statistics

Season	g	mp	min	Total	pts	3-Point	pts	F-Throws	pts	Rebounds	pts	pts	pts	pts	pts	pts	pts	pts	pts
				fg		fg		fg		off	def	tot	avg	pf	fo	ast	tot	blk	stl
2016-17	30	11	483/13.4	47-127	.370	9-29	.231	31-59	.525	24	47	111	3.7	34	0	10	42	11	16
2017-18	10	11	167/16.7	25-51	.490	5-18	.278	6-15	.400	13	36	49	4.9	11	0	4	19	7	5
TOTAL	40	11	578/14.3	72-178	.404	14-47	.296	37-74	.500	37	123	160	4.0	42	0	14	61	18	21



#33 Hailey Pascoe

Guard • Junior • 5-9
Concord, Calif. • Clayton Valley
Major: Psychology

2016-17 (Sophomore Season)

Appeared in all 30 games, making three starts...Finished with 6.7 points and 2.0 rebounds per game...Shot 37.5 percent from the field and ranked second on the team with a three-point field goal percentage of 38.8 percent...Her three-point field goal percentage ranked ninth in the Patriot League...Shot 77.3 percent from the free throw line...Scored 14 points on 4-of-7 shooting against Delaware State (11/16)...Scored 14 points against Bucknell (1/11)...Collected 16 points and four rebounds, while shooting 6-for-15 overall and 4-for-8 from three-point range at Holy Cross (1/14)...Scored 11 points on 4-of-7 shooting against Navy (1/18)...Netted 14 point and was a perfect 4-for-4 from beyond the arc in a win over Loyola (2/1)...Scored 15 points on 6-of-8 shooting along with three rebounds in a win over Colgate (3/1)...Named to the Patriot League Academic Honor Roll.

2015-16 (Freshman Season)

Named to the Patriot League All-Rookie Team...started 24 games and appearance in all 31 contests...drained three treys against BU (1/30)...pulled down a career-best six rebounds against Lafayette (1/27)...scored a career-high nine points behind three three-pointers at Navy (1/20)...tallied six points against Holy Cross (1/17)...scored five points against Boston University (1/2), Saint Joseph's (12/2), Delaware State (11/23) and Monmouth (11/13)...named to the Patriot League Academic Honor Roll.

BEFORE LEHIGH

Hailey Pascoe, a 5-9 guard, is the all-time leading scorer at Clayton Valley Charter High School in Concord, Calif. with 1,840 points and also holds the school's single-season scoring (707) and single-season free throws (105) records. Pascoe was a four-year varsity starter and three-year captain who averaged 16.1 points per game throughout her career, including an impressive mark of 22.1 points per game during her senior season. A four-time All-League selection and two-time All-League MVP, Pascoe also earned her high school's Female Athlete of the Year award following her senior season. Pascoe is the third member of Kelly Sopak's Cal Stars AAU program to join the Mountain Hawks in recent years (Kelly Peterson '13, Quinci Mann '18). As a sophomore, Pascoe was a key contributor to the Cal Stars team that finished second overall at Nike Nationals and completed her AAU career with another strong showing at Nationals last summer. Strong in the classroom as well, Pascoe graduated with a 4.2 GPA.



Pascoe's Career Statistics

Season	gp	pts	Total		3-Point		F-Throws		Rebounds				Assists				Steals			
			fg	pt	fg	pt	at	pt	off	def	tot	avg	pf	to	ast	tot	blk	stl	pts	avg
2015-16	31-24	418/75.8	37-122	.303	23-76	.303	7-15	.467	25	44	69	2.2	29	0	18	25	4	14	104	3.4
2016-17	30-3	564/188.0	63-184	.342	45-116	.387	17-22	.773	12	48	60	2.0	40	0	17	34	4	9	200	6.7
TOTAL	61-27	982/177.3	100-306	.345	68-192	.354	24-37	.649	37	92	129	2.1	72	0	35	49	8	23	304	5.0

2017-18 Game-By-Game:

Opponent	Pts.	Rbs.	Ast.
at Minnesota	-	-	-
at Monmouth	-	-	-
at Villanova	-	-	-
at Cornell	-	-	-
MANSFIELD	-	-	-
FAIRFIELD	-	-	-
LA SALLE	-	-	-
MT. ST. MARY'S	-	-	-
at Sacred Heart	-	-	-
NJIT	-	-	-
at LIU Brooklyn	-	-	-
LAFAYETTE	-	-	-
NAVY	-	-	-
at Holy Cross	-	-	-
BOSTON U.	-	-	-
BUCKNELL	-	-	-
at American	-	-	-
at Colgate	-	-	-
ARMY	-	-	-
at Loyola	-	-	-
at Navy	-	-	-
at Boston U.	-	-	-
at Bucknell	-	-	-
AMERICAN	-	-	-
COLGATE	-	-	-
at Army	-	-	-
LOYOLA	-	-	-
at Lafayette	-	-	-
HOLY CROSS	-	-	-

* game started



#34 Mariah Sexe

Forward • Freshman • 6-2
Woodbury, Minn. • East Ridge
Major: Arts and Sciences

BEFORE LEHIGH

Helped lead East Ridge High School to its first ever Suburban East Conference championship and sectional championship titles...Honorable Mention All-State selection as a senior in 2016-17...Miss Minnesota Basketball nominee as a senior...Selected to participate in the Class 4A Minnesota Girls High School All-Star Series in 2016-17...A three-time All-Suburban East Conference selection after earning honorable mention accolades as a freshman...Graduated as East Ridge's all-time leading scorer (1,366 points) and rebounder (967)...Presented with East Ridge's Outstanding Player Award as a senior...Academic All-State selection as a senior and graduated summa cum laude...Four year honor roll student.

GETTING TO KNOW MARIAH

Nickname: Mar, Ri, or Sexe

Why did you choose Lehigh?: I chose Lehigh because it was perfect in every category. It has rigorous academics, competitive athletics, great social opportunities, amazing people, and a very welcoming community.

What's your favorite thing about Lehigh?: The people and the campus!

Thoughts on Lehigh Coaching Staff (Coach Sue Troyan): Coach Troyan and the rest of the coaching staff are a big reason as to why I chose Lehigh. They really care about each individual on the team, both on and off the court, and have created such a tight knit and strong program. They train us to be hardworking athletes and successful people in every aspect of life.

Major & Why: Biology because I want to go to Physician Assistants school after undergrad.

Favorite Place on Campus: Saxbys

Favorite Food: Pickles, Popcorn, and Pancakes

Favorite Color: Yellow

Favorite Musical Artist: J. Cole and Chance the Rapper

Favorite Movie: Shawshank Redemption and Bridesmaids

Favorite TV Show: Prison Break and Shameless

Favorite Website: Netflix

Favorite Pro Team: Minnesota Lynx

Favorite Athlete In Another Sport: Simone Biles

Favorite place to study: Linderman

Favorite thing to do on a rainy day: Watch a movie and eat popcorn

Hobbies: Baking, being with my friends, going to my cabin

Most admired person and why: My parents because they have done everything to make me happy and give me a great life.

Biggest sports accomplishment: Scoring 1,000 points in high school

Magazine Cover I'd Like To Be On: Free People or Vogue

Place I'd Like To Visit: Fiji and Greece

Talent I'd Most Like To Have: Photographic memory

Dream Job: Pediatric Physician Assistant with summers off so I can travel

One unique thing no one knows about me: My favorite animal, obviously behind dogs, is a hedgehog.

If I Didn't Play Basketball, I Would Play: Volleyball

If I Had \$1 Billion, I Would: Give back, travel to as many places as I can, and share with my family.



2017-18 Game-By-Game:

Opponent	Pts.	Rbs.	Ast.
at Minnesota	7	3	0
at Monmouth	2	2	0
at Villanova	0	3	2
at Cornell	2	2	0
MANSFIELD	5	6	1
FAIRFIELD	9	2	0
LA SALLE	2	2	0
MT. ST. MARY'S	2	3	0
at Sacred Heart	2	5	1
NJIT	7	5	1
at LIU Brooklyn			
LAFAYETTE			
NAVY			
at Holy Cross			
BOSTON U.			
BUCKNELL			
at American			
at Colgate			
ARMY			
at Loyola			
at Navy			
at Boston U.			
at Bucknell			
AMERICAN			
COLGATE			
at Army			
LOYOLA			
at Lafayette			
HOLY CROSS			

* game started

Sexe's Career Statistics

Season	gp-gm		Total		3-Point		F-Thrus		Rebounds				Assists						Stealing	
	pts	reb	pts	reb	pts	reb	pts	reb	off	def	tot	avg	pts	off	def	tot	avg	pts	avg	
2017-18	10-11	185/10.6	13-25	520	2-4	50	18-15	667	4	25	29	3.3	12	0	5	10	6	30	3.0	
TOTAL	10-11	185/10.6	13-25	520	2-4	50	18-15	667	4	25	29	3.3	12	0	5	10	6	30	3.0	



#44 Mae Williams

Forward • Senior • 6-0
Lafayette, Colo. • Monarch
Major: Bioengineering

2016-17 (Junior Season)

Appeared in all 30 games, making 26 starts...Averaged 2.2 points and 3.7 rebounds per game...Shot 35.5 percent from the field...Pulled down seven rebounds at Mount St. Mary's (11/22) and against Monmouth (11/27)...Tallied eight points and four rebounds on 2-of-3 shooting against Army (12/30)...Collected nine points and four rebounds on 3-of-4 shooting against Boston University (1/2)...Totaled 10 points on 4-of-7 shooting to go with six rebounds, one assist and one steal at Colgate (2/22)...Named to the Patriot League Academic Honor Roll.

2015-16 (Sophomore Season)

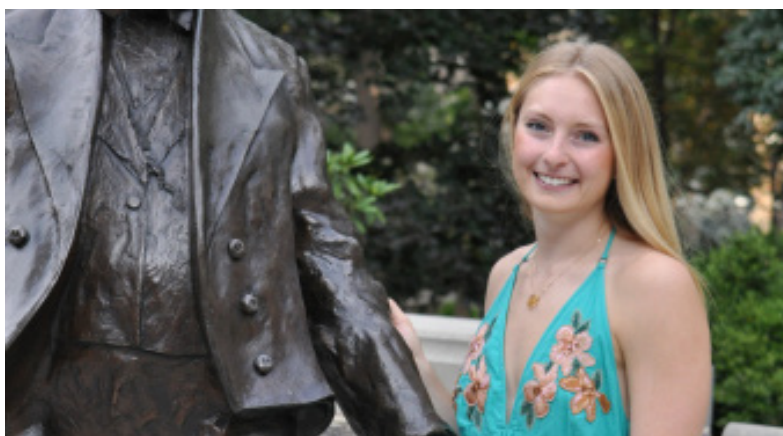
Saw action in 15 games...scored four points in a big win at Lafayette (2/20)...drained a three-pointer in a 61-52 win at American (2/6)...recorded two rebounds and an assist against BU (1/30)...went 2-for-2 from the free throw line at Bucknell (1/13)...pulled down two rebounds in the league-opener at Army West Point (12/30)...missed non-league play due to illness.

2014-15 (Freshman Season)

Saw action in 15 games...scored her first career point against Holy Cross (2/14)...pulled down three rebounds and dished an assist against East Stroudsburg (11/17).

BEFORE LEHIGH

Williams comes to Lehigh from Lafayette, Colo. where she helped lead Monarch High School to a runner-up finish in the Girls Class 5A State Championship... competed in the USA Olympic Trials and was a member of the Blue-Star/Hoopgurlz All-State Game as well as a CHSAA first team All-State honoree... played for the Mile High Rockies AAU team...graduated with Magna Cum Laude class honors and was named her school's student of the semester in 2014.



Williams' Career Statistics

Season	opp	minutes	Total		3-Point		F-Throws		Rebounds				Assists					Stealing	
			fg	pts	fg	pts	fg	pts	off	def	tot	avg	pf	to	ast	blk	stl	pts	avg
2014-15	15-0	247/1.6	0-1	.000	0-0	.000	1-2	.500	1	3	4	0.3	0	0	1	1	0	1	0.1
2015-16	15-0	624/4.1	2-7	.286	1-4	.250	6-6	1.000	4	6	10	0.7	3	0	1	4	0	11	0.7
2016-17	30-26	536/17.9	22-62	.355	8-29	.276	14-30	.467	33	78	111	3.7	47	0	16	44	3	66	2.2
2017-18	10-10	285/28.5	12-26	.462	4-12	.333	2-2	1.000	10	24	34	3.4	10	0	12	7	1	30	3.0
TOTAL	70-36	857/11.9	36-95	.375	13-45	.289	23-40	.575	56	111	167	2.4	60	0	30	56	4	108	1.5

2017-18 Game-By-Game:

Opponent	Pts.	Rbs.	Ast.
at Minnesota*	11	5	0
at Monmouth*	5	4	0
at Villanova*	0	7	0
at Cornell*	6	3	2
MANSFIELD*	0	2	1
FAIRFIELD*	0	6	5
LA SALLE*	0	2	0
MT. ST. MARY'S*	2	3	0
at Sacred Heart*	4	3	1
NJIT*	2	7	3
at LIU Brooklyn			
LAFAYETTE			
NAVY			
at Holy Cross			
BOSTON U.			
BUCKNELL			
at American			
at Colgate			
ARMY			
at Loyola			
at Navy			
at Boston U.			
at Bucknell			
AMERICAN			
COLGATE			
at Army			
LOYOLA			
at Lafayette			
HOLY CROSS			

* game started



2017-18 Lehigh Women's Basketball
Lehigh Combined Team Statistics (as of Dec 06, 2017)
All games



RECORD:	OVERALL	HOME	AWAY	NEUTRAL
ALL GAMES	6-4	4-1	2-2	0-1
CONFERENCE	0-0	0-0	0-0	0-0
NON-CONFERENCE	6-4	4-1	2-2	0-1

#	Player	gp	pts	avg	Total		3-Point		F-Throw		Rebounds				pf	dq	a	to	blk	stl	pts	avg
					fg	fg%	3fg	3fg%	ft	ft%	off	def	tot	avg								
28	Mann, Quinn	10-10	295	29.5	44-109	.404	16-50	.320	26-34	.765	2	22	24	2.4	15	0	18	23	3	7	130	13.0
15	Buhr, Camryn	10-10	309	30.9	44-104	.423	4-13	.308	23-30	.767	23	45	68	6.8	28	0	19	23	6	7	115	11.5
12	Grundholter, Gena	10-10	257	25.7	40-117	.342	5-21	.238	18-22	.818	12	33	45	4.5	18	0	18	26	5	4	103	10.3
30	Benz, Camryn	10-0	167	16.7	25-51	.490	5-18	.278	6-15	.400	13	36	49	4.9	8	0	4	19	7	5	61	6.1
05	Deaneay, Bernadette	10-8	188	18.8	20-56	.357	15-36	.417	5-6	.833	1	9	10	1.0	9	0	13	12	0	3	60	6.0
22	Hedstrom, Hannah	10-10	302	30.2	16-38	.421	0-6	.000	15-28	.536	6	46	52	5.2	30	1	41	33	3	10	47	4.7
34	Scow, Maiah	10-8	106	13.3	13-25	.520	2-4	.500	10-15	.667	8	25	33	4.1	12	0	5	10	6	0	38	4.8
44	Williams, Mae	10-10	209	20.9	12-26	.462	4-12	.333	2-2	1.000	18	24	42	4.2	18	0	12	7	1	2	30	3.0
14	Gafari, Paige	6-8	21	3.5	5-10	.500	4-8	.500	0-2	.000	2	0	2	0.3	3	0	2	1	1	0	14	2.3
13	Eripret, Meagan	9-0	63	7.0	9-19	.474	0-2	.000	2-4	.500	2	9	11	1.2	5	0	1	7	6	1	20	2.2
25	Clougherty, Mary	10-8	91	9.1	8-26	.308	6-18	.333	0-0	.000	2	13	15	1.5	5	0	7	1	0	1	22	2.2
Team											28	21	49					6				
Total.....		10	2008		236-581	.406	61-188	.324	107-158	.677	117	283	400	40.0	149	1	132	168	38	48	640	64.0
Opponents.....		10	2000		236-606	.389	65-206	.316	101-144	.701	109	248	357	35.7	191	-	114	139	37	75	638	63.8

TEAM STATISTICS	LEHIGH	OPP
SCORING	640	638
Points per game	64.0	63.8
Scoring margin	+0.2	-
FIELD GOALS-ATT	236-581	236-606
Field goal pct	.406	.389
3 POINT FG-ATT	61-188	65-206
3-point FG pct	.324	.316
3-pt FG made per game	6.1	6.5
FREE THROWS-ATT	107-158	101-144
Free throw pct	.677	.701
F-Throws made per game	10.7	10.1
REBOUNDS	400	357
Rebounds per game	40.0	35.7
Rebounding margin	+4.3	-
ASSISTS	132	114
Assists per game	13.2	11.4
TURNOVERS	168	139
Turnovers per game	16.8	13.9
Turnover margin	-2.9	-
Assist/Turnover ratio	0.8	0.8
STEALS	40	75
Steals per game	4.0	7.5
BLOCKS	38	37
Blocks per game	3.8	3.7
ATTENDANCE	6880	10111
Home games Avg/Game	5-1216	4-865
Neutral site Avg/Game	-	1-661

Date	Opponent	Score	Att
11/11/17	at Minnesota	L 73-107	2642
11/14/17	at Monmouth	W 75-57	435
11/17/17	vs Villanova	L 42-62	8851
11/20/17	at Cornell	W 62-57	124
11/22/17	MASSFIELD	W 77-47	486
11/25/17	FAIRFIELD	W 56-53	571
11/26/17	LA SALLE	L 61-89	544
11/29/17	MOUNT ST. MARY'S	W 75-71	478
12/3/17	at Sacred Heart	L 55-65	258
12/6/17	NJIT	W 64-58	4089

* = Conference game

Score by Period	1st	2nd	3rd	4th	Total
Lehigh	153	153	151	143	600
Opponents	165	168	158	146	638



**2017-18 Lehigh Women's Basketball
Lehigh Combined Team Statistics (as of Dec 06, 2017)
Home games**



RECORD:	OVERALL	HOME	AWAY	NEUTRAL
ALL GAMES	4-1	4-1	0-0	0-0
CONFERENCE	0-0	0-0	0-0	0-0
NON-CONFERENCE	4-1	4-1	0-0	0-0

#	Player	gp	gs	min	avg	fg	fg%	3pt	3pt%	f	f%	r	off	def	tot	avg	pt	stl	a	to	blk	sh	pts	avg
28	Mann, Quinn	5-5		145	29.0	26-52	.500	10-26	.385	14-19	.737	0	11	11	22	8	11	11	12	2	4	75	15.2	
15	Buhr, Camryn	5-5		147	29.4	22-51	.431	3-6	.500	15-20	.750	10	22	32	64	11	0	9	10	2	4	62	12.4	
12	Grundholzer, Gena	5-5		123	24.6	19-55	.345	0-0	.000	7-8	.875	1	13	14	28	8	11	4	11	4	3	45	9.0	
05	Devaney, Bernadette	5-0		88	17.6	11-24	.458	9-18	.500	5-6	.833	0	5	5	10	4	0	6	7	0	2	36	7.2	
34	Seze, Maliah	5-0		52	10.4	9-18	.500	1-2	.500	6-9	.667	5	13	18	36	8	11	2	6	1	1	25	5.0	
22	Hedstrom, Hannah	5-5		165	33.0	9-18	.500	0-4	.000	7-10	.700	4	16	22	44	11	0	31	20	3	5	25	5.0	
38	Braz, Camryn	5-0		79	15.8	12-22	.545	0-7	.000	0-2	.000	6	18	24	48	5	11	1	7	7	3	24	4.8	
13	Eripret, Meagan	4-0		35	8.8	8-13	.615	0-1	.000	1-2	.500	1	7	8	20	2	0	0	5	2	1	17	4.3	
25	Claugherty, Mary	5-0		48	9.6	5-15	.333	3-8	.375	0-0	.000	1	6	7	14	2	11	3	0	0	1	13	2.6	
14	Galiani, Paige	3-0		13	4.3	2-5	.400	2-5	.400	0-2	.000	1	0	1	0.3	2	0	2	1	1	0	6	2.0	
44	Williams, Mia	5-5		105	21.0	2-10	.200	0-5	.000	0-0	.000	10	18	28	40	10	11	9	3	0	2	4	0.8	
Team													13	12	25				1					
Total.....		5		1008		125-283	.442	28-80	.311	55-78	.705	52	135	187	374	71	11	75	83	22	25	333	66.6	
Opponents.....		5		1000		105-278	.378	29-87	.333	51-73	.699	46	116	162	324	90	-	50	81	11	40	290	58.0	

TEAM STATISTICS	LEHIGH	OPP
SCORING	333	290
Points per game	66.6	58.0
Scoring margin	+8.6	-
FIELD GOALS-ATT	125-283	105-278
Field goal pct	.442	.378
3 POINT FG-ATT	28-80	29-87
3-point FG pct	.311	.333
3-pt FG made per game	5.6	5.8
FREE THROWS-ATT	55-78	51-73
Free throw pct	.705	.699
F-Throws made per game	11.0	10.2
REBOUNDS	187	162
Rebounds per game	37.4	32.4
Rebounding margin	+5.0	-
ASSISTS	75	50
Assists per game	15.0	10.0
TURNOVERS	83	81
Turnovers per game	16.6	16.2
Turnover margin	-8.4	-
Assist/Turnover ratio	0.9	0.6
STEALS	25	40
Steals per game	5.0	8.0
BLOCKS	22	11
Blocks per game	4.4	2.2
ATTENDANCE	6880	0
Home games-Avg/Game	5-1216	0-0
Neutral site-Avg/Game	-	0-0

Date	Opponent	Score	Att
11/23/17	MANCHESTER	W 77-47	486
11/25/17	FAIRFIELD	W 56-53	571
11/26/17	LA SALLE	L 61-89	544
11/29/17	MOUNT ST. MARY'S	W 75-71	478
12/6/17	MIT	W 64-58	4089

* = Conference game

Score by Periods	1st	2nd	3rd	4th	Total
Lehigh	84	79	79	91	333
Opponents	69	78	74	63	284



**2017-18 Lehigh Women's Basketball
Lehigh Combined Team Statistics (as of Dec 06, 2017)
Away games**



RECORD:	OVERALL	HOME	AWAY	NEUTRAL
ALL GAMES	2-2	0-0	2-2	0-0
CONFERENCE	0-0	0-0	0-0	0-0
NON-CONFERENCE	2-2	0-0	2-2	0-0

#	Player	gp	pts	avg	Total		3-Point		F-Throw		Rebounds				pf	dq	a	to	blk	stl	pts	avg
					fg	fg%	3fg	3fg%	ft	ft%	off	def	tot	avg								
12	Grundholzer, Gena	4-4	118	27.5	19-49	.388	5-11	.455	11-14	.786	9	15	24	6.0	9	0	6	13	1	1	54	13.5
20	Mann, Quinci	4-4	124	31.0	18-47	.383	6-22	.273	11-13	.846	2	9	11	2.8	4	0	10	9	1	3	53	13.3
15	Baker, Camryn	4-4	131	32.8	20-43	.465	1-6	.167	4-6	.667	11	19	30	7.5	13	0	9	11	4	2	45	11.3
44	Williams, Mae	4-4	89	22.3	10-15	.667	4-7	.571	2-2	1.000	7	8	15	3.8	5	0	3	3	1	0	26	6.5
05	Donawey, Bernadette	4-0	78	17.5	9-26	.346	6-14	.429	0-0	.000	1	3	4	1.0	3	0	4	4	0	1	24	6.0
30	Benz, Camryn	4-0	65	16.3	8-19	.421	3-6	.500	4-9	.444	6	12	18	4.5	3	0	1	12	0	2	23	5.8
22	Hedstrom, Hannah	4-4	112	28.0	6-17	.353	0-1	.000	6-16	.375	2	22	24	6.0	14	0	10	10	0	5	18	4.5
34	Sexe, Mariah	4-0	46	11.5	4-7	.571	1-2	.500	4-6	.667	2	10	12	3.0	4	0	1	4	5	0	13	3.3
14	Gofani, Paige	2-0	3	1.5	1-2	.500	1-2	.500	0-0	.000	0	0	0	0.0	1	0	0	0	0	0	3	1.5
25	Clougherty, Mary	4-0	31	7.8	2-9	.222	2-8	.250	0-0	.000	1	5	6	1.5	1	0	4	0	0	0	6	1.5
13	Elipret, Micaela	4-0	19	4.8	0-3	.000	0-1	.000	0-0	.000	0	2	2	0.5	2	0	0	2	2	0	0	0.0
Team											10	5	19					3				
Total.....		4	808		97-237	.409	29-80	.363	42-56	.696	51	114	165	41.2	59	0	48	71	14	14	285	66.2
Opponents.....		4	800		109-259	.421	29-82	.354	39-58	.672	49	98	147	36.8	79	-	50	51	19	29	286	71.5

TEAM STATISTICS	LEHIGH	OPP
SCORING	285	286
Points per game	66.2	71.5
Scoring margin	-5.2	-
FIELD GOALS-ATT	97-237	109-259
Field goal pct	.409	.421
3 POINT FG-ATT	29-80	29-82
3-point FG pct	.363	.354
3-pt FG made per game	7.3	7.3
FREE THROWS-ATT	42-56	39-58
Free throw pct	.696	.672
F-Throws made per game	11.5	9.8
REBOUNDS	165	147
Rebounds per game	41.2	36.8
Rebounding margin	+4.5	-
ASSISTS	48	50
Assists per game	12.0	12.5
TURNOVERS	71	51
Turnovers per game	17.8	12.8
Turnover margin	-5.0	-
Assist/Turnover ratio	0.7	1.0
STEALS	14	29
Steals per game	3.5	7.3
BLOCKS	14	19
Blocks per game	3.5	4.8
ATTENDANCE	0	3460
Home games-Avg/Game	0-0	4-865
Neutral site-Avg/Game	-	0-0

Date	Opponent		Score	Att
11/11/17	at Minnesota	L	73-107	2542
11/14/17	at Monmouth	W	75-57	435
11/20/17	at Cornell	W	62-57	124
12/01/17	at Sacred Heart	L	55-65	228

* = Conference game

Score by Period	1st	2nd	3rd	4th	Total
Lehigh	62	65	61	77	265
Opponents	62	74	67	63	266

WHEN LEHIGH...

Played at home:	4-1
Played on the road:	2-2
Played at neutral site:	0-1

Led at the half:	5-0
Trailed at the half:	1-4
Was tied at the half:	0-0
Went to overtime:	0-0
Went to double overtime:	0-0

Scored 90 or more points:	0-0
Scored 80-89 points:	0-0
Scored 70-79 points:	3-1
Scored 60-69 points:	2-1
Scored 50-59 points:	1-1
Scored 40-49 points:	0-1
Scored fewer than 40 points:	0-0

Allowed 90 or more points:	0-1
Allowed 80-89 points:	0-0
Allowed 70-79 points:	1-0
Allowed 60-69 points:	0-3
Allowed 50-59 points:	4-0
Allowed 40-49 points:	1-0
Allowed fewer than 40 points:	0-0

Shot 50% or more:	1-0
Shot 40-49%:	5-0
Shot 30-39%:	0-3
Shot under 30%:	0-1

Allowed 50% or more:	0-2
Allowed 40-49%:	1-0
Allowed 30-39%:	4-2
Allowed under 30%:	1-0

Shot 50% or more 3FG:	1-0
Shot 40-49% 3FG:	0-0
Shot 30-39% 3FG:	3-2
Shot under 30% 3FG:	2-2

Outrebounded opponents:	5-2
Was outrebounded:	0-1
Tied opponent in rebounding:	1-1

Committed less than 15 turnovers:	1-2
Committed 15 or more turnovers:	5-2

Forced 15 or more turnovers:	3-1
Forced fewer than 15 turnovers:	3-3

Committed more turnovers:	4-3
Committed fewer turnovers:	2-1
Tied in turnovers:	0-0

LEHIGH...**By Month**

November	5-3
December	1-1

By Day

Sunday	0-2
Monday	1-0
Tuesday	1-0
Wednesday	3-0
Thursday	0-0
Friday	0-1
Saturday	1-1

By Time

Morning	1-0
Afternoon	1-4
Evening	4-0

VS. THE CONFERENCES

Atlantic Sun	1-0
Atlantic 10	0-1
Big East	0-1
Big Ten	0-1
Ivy League	1-0
MAAC	2-0
NEC	1-1
PSAC	1-0

TEAM GAME HIGHS

POINTS	77	MANFIELD (11/22/17)
	75	MOUNT ST. MARY'S (11/29/17)
	75	at Monmouth (11/14/17)
	73	at Minnesota (11/11/17)
	64	NIIT (12/6/17)
FIELD GOALS MADE	29	MOUNT ST. MARY'S (11/29/17)
	28	MANFIELD (11/22/17)
FIELD GOAL ATTEMPTS	68	at Minnesota (11/11/17)
	62	LA SALLE (11/26/17)
	62	at Monmouth (11/14/17)
FIELD GOAL PERCENTAGE	.508 (29-58)	MOUNT ST. MARY'S (11/29/17)
	.489 (23-47)	at Cornell (11/20/17)
3 PT FIELD GOALS MADE	13	MOUNT ST. MARY'S (11/29/17)
	8	at Monmouth (11/14/17)
	8	at Minnesota (11/11/17)
3 PT FG ATTEMPTS	23	MOUNT ST. MARY'S (11/29/17)
	22	at Minnesota (11/11/17)
3 PT FG PERCENTAGE	.565 (13-23)	MOUNT ST. MARY'S (11/29/17)
	.381 (8-21)	at Monmouth (11/14/17)
FREE THROWS MADE	17	LA SALLE (11/26/17)
	15	at Monmouth (11/14/17)
FREE THROW ATTEMPTS	27	at Monmouth (11/14/17)
	22	LA SALLE (11/26/17)
FREE THROW PERCENTAGE	1.000 (4-4)	MOUNT ST. MARY'S (11/29/17)
	.786 (11-14)	FAIRFIELD (11/25/17)
	.786 (11-14)	at Minnesota (11/11/17)
REBOUNDS	50	MANFIELD (11/22/17)
	48	vs Villanova (11/17/17)
ASSISTS	21	MOUNT ST. MARY'S (11/29/17)
	20	MANFIELD (11/22/17)
STEALS	8	MANFIELD (11/22/17)
	7	LA SALLE (11/26/17)
BLOCKED SHOTS	7	MANFIELD (11/22/17)
	6	NIIT (12/6/17)
TURNOVERS	23	at Minnesota (11/11/17)
	21	MOUNT ST. MARY'S (11/29/17)
FOULS	19	LA SALLE (11/26/17)
	19	vs Villanova (11/17/17)

INDIVIDUAL GAME HIGHS

Points	24	Mann, Quinci at Monmouth (11/14/17)
	22	Buhr, Camryn vs Fairfield (11/25/17)
	20	Devaney, Bernadette vs Mount St. Mary's (11/29/17)
	20	Mann, Quinci vs Mount St. Mary's (11/29/17)
	19	Mann, Quinci at Cornell (11/20/17)
Field Goals Made	8	Grundhoffer, Gena at Sacred Heart (12/3/17)
	8	Buhr, Camryn vs Fairfield (11/25/17)
	8	Buhr, Camryn at Monmouth (11/14/17)
Field Goal Att.	20	Grundhoffer, Gena at Sacred Heart (12/3/17)
	16	Mann, Quinci at Monmouth (11/14/17)
FG Pct (min 5 made)	.833 (5-6)	Williams, Mae at Minnesota (11/11/17)
	.778 (7-9)	Mann, Quinci vs Mansfield (11/22/17)
3-Point FG Made	6	Devaney, Bernadette vs Mount St. Mary's (11/29/17)
	6	Mann, Quinci vs Mount St. Mary's (11/29/17)
3-Point FG Att.	9	Mann, Quinci vs Mount St. Mary's (11/29/17)
	8	Devaney, Bernadette vs Mount St. Mary's (11/29/17)
	8	Mann, Quinci at Monmouth (11/14/17)
3-Pt FG Pct (min 2 made)	1.000 (2-2)	Buhr, Camryn vs Fairfield (11/25/17)
	.750 (6-8)	Devaney, Bernadette vs Mount St. Mary's (11/29/17)
	.750 (3-4)	Mann, Quinci vs Mansfield (11/22/17)
Free Throws Made	7	Mann, Quinci vs La Salle (11/26/17)
	7	Buhr, Camryn vs Mansfield (11/22/17)
	7	Grundhoffer, Gena at Monmouth (11/14/17)
Free Throw Att.	10	Mann, Quinci vs La Salle (11/26/17)
	9	Grundhoffer, Gena at Monmouth (11/14/17)
FT Pct (min 3 made)	1.000 (4-4)	Mann, Quinci at Cornell (11/20/17)
	1.000 (4-4)	Buhr, Camryn vs Villanova (11/17/17)
Rebounds	13	Grundhoffer, Gena at Sacred Heart (12/3/17)
	11	Buhr, Camryn vs Mansfield (11/22/17)
	12	Hedstrom, Hannah vs Mansfield (11/22/17)
Assists	6	Hedstrom, Hannah vs Mount St. Mary's (11/29/17)
	6	Hedstrom, Hannah vs Fairfield (11/25/17)
	3	Hedstrom, Hannah vs Mansfield (11/22/17)
Steals	3	Hedstrom, Hannah at Monmouth (11/14/17)
	3	Benz, Camryn vs NIIT (12/6/17)
Blocked Shots	2	Sexe, Mariah at Sacred Heart (12/3/17)
	2	Buhr, Camryn at Sacred Heart (12/3/17)
	2	Benz, Camryn vs Mount St. Mary's (11/29/17)
	2	Grundhoffer, Gena vs Mansfield (11/22/17)
	2	Buhr, Camryn at Cornell (11/20/17)
	2	Eripet, Meagan vs Villanova (11/17/17)
	2	Sexe, Mariah at Monmouth (11/14/17)
Turnovers	7	Hedstrom, Hannah vs Mount St. Mary's (11/29/17)
	6	Benz, Camryn at Minnesota (11/11/17)
Fouls	5	Hedstrom, Hannah vs Villanova (11/17/17)
	4	Hedstrom, Hannah at Sacred Heart (12/3/17)
	4	Buhr, Camryn vs La Salle (11/26/17)
	4	Williams, Mae vs La Salle (11/26/17)
	4	Buhr, Camryn at Cornell (11/20/17)
	4	Hedstrom, Hannah at Cornell (11/20/17)
	4	Buhr, Camryn vs Villanova (11/17/17)
	4	Hedstrom, Hannah at Minnesota (11/11/17)
	4	Buhr, Camryn at Minnesota (11/11/17)



2017-18 Lehigh Women's Basketball
Lehigh Season Schedule/Results & Leaders (as of Dec 08, 2017)
All games



RECORD:	OVERALL	HOME	AWAY	NEUTRAL
ALL GAMES	6-4	4-1	2-2	0-1
CONFERENCE	0-0	0-0	0-0	0-0
NON-CONFERENCE	6-4	4-1	2-2	0-1

Date	Opponent	Score	Att. High Points	High Rebounds
11/11/17	at Minnesota	78-107 L	2642 (12)Hedstrom, Hannah	(7)Hedstrom, Hannah (7)Buhr, Camryn
11/14/17	at Monmouth	W 75-57	435 (24)Mann, Quinci	(9)Buhr, Camryn (9)Hedstrom, Hannah
11/17/17	vs Villanova	42-62 L	6651 (14)Benz, Camryn	(7)Grundhoffer, Gene (7)Benz, Camryn (7)Williams, Mae
11/20/17	at Cornell	W 62-57	124 (19)Mann, Quinci	(7)Buhr, Camryn
11/22/17	MAHSFIELD	W 77-47	486 (18)Mann, Quinci	(11)Buhr, Camryn
11/25/17	FAIRFIELD	W 56-53	571 (22)Buhr, Camryn	(7)Hedstrom, Hannah
11/26/17	LA SALLE	61-69 L	544 (17)Mann, Quinci	(5)Hedstrom, Hannah (5)Benz, Camryn
11/29/17	MOUNT ST. MARY'S	W 75-71	470 (20)Devaney, Bernadette (20)Mann, Quinci	(6)Buhr, Camryn
12/3/17	at Sacred Heart	55-65 L	259 (18)Grundhoffer, Gene	(13)Grundhoffer, Gene
12/6/17	NJIT	W 64-50	4009 (15)Mann, Quinci	(7)Williams, Mae

* - Conference game

Attendance Summary	Games	Attended	Avg/Game
Home	5	6080	1216
Away	4	8460	865
Neutral	1	6651	6651
Total	10	16191	1619



2017-18 Lehigh Women's Basketball
Lehigh Points-Rebounds-Assists (as of Dec 06, 2017)
All games



Opponent	Date	Score		05 DEWNEY, E	12 GARDINOFFE	13 ERRIET, A	14 GALAN, P	15 BURKE, C	20 MANN, D	22 HEIDSTRICH
at Minnesota	11/11/17	73-107	L	4-0-1	6-3-2	0-0-0	3-0-0	7-7-3	10-4-2	12-7-2
at Monmouth	11/14/17	75-57	W	3-1-1	16-5-1	0-2-0	0-0-0	16-9-2	24-2-0	2-9-3
vs Villanova	11/17/17	42-62	L	0-1-3	4-7-0	3-1-1	5-1-0	8-6-1	1-2-0	4-6-0
at Cornell	11/20/17	62-57	W	5-1-1	14-3-2	0-0-0	DNP	9-7-3	19-4-3	2-2-2
MASSFIELD	11/22/17	77-47	W	5-2-2	4-3-0	7-5-0	6-0-2	15-11-0	10-5-1	2-4-12
FAIRFIELD	11/25/17	56-53	W	0-2-1	13-3-0	DNP	DNP	22-5-0	6-1-0	4-7-6
LA SALLE	11/26/17	61-69	L	3-0-0	4-0-0	2-1-0	0-0-0	10-4-1	17-0-1	13-5-3
MOUNT ST. MARY'S	11/29/17	75-71	W	20-1-1	12-2-4	4-1-0	DNP	8-6-5	20-1-4	2-4-6
at Sacred Heart	12/3/17	55-65	L	12-2-1	10-13-1	0-0-0	DNP	13-7-1	0-1-5	2-6-3
NJIT	12/6/17	64-50	W	8-0-2	12-6-0	4-1-0	0-1-0	7-6-3	15-4-2	4-2-4

Opponent	Date	Score		25 CLOUGHERTY	30 BENZ, C	34 SERENY, M	44 WILLIAMS, M
at Minnesota	11/11/17	73-107	L	3-4-3	10-4-1	7-3-0	11-5-0
at Monmouth	11/14/17	75-57	W	0-1-1	7-8-0	2-2-0	5-4-0
vs Villanova	11/17/17	42-62	L	3-2-0	14-7-2	0-3-2	0-7-0
at Cornell	11/20/17	62-57	W	3-1-0	2-2-0	2-2-0	6-3-2
MASSFIELD	11/22/17	77-47	W	5-2-1	10-6-0	5-6-1	0-2-1
FAIRFIELD	11/25/17	56-53	W	0-1-1	2-3-0	9-2-0	0-6-5
LA SALLE	11/26/17	61-69	L	2-1-1	0-5-0	2-2-0	0-2-0
MOUNT ST. MARY'S	11/29/17	75-71	W	3-2-0	2-5-1	2-3-0	2-3-0
at Sacred Heart	12/3/17	55-65	L	0-0-0	4-4-0	2-5-1	4-3-1
NJIT	12/6/17	64-50	W	3-1-0	2-5-0	7-5-1	2-7-3

GAME 1: MINNESOTA 107, LEHIGH 73



Score by periods	1st	2nd	3rd	4th	Total
Lehigh	10	18	17	28	73
Minnesota	33	24	23	27	107

GAME 2: LEHIGH 75, MONMOUTH 57



Score by periods	1st	2nd	3rd	4th	Total
Lehigh	16	25	12	22	75
Monmouth	12	14	18	13	57

GAME 3: VILLANOVA 62, LEHIGH 42



Score by periods	1st	2nd	3rd	4th	Total
Lehigh	7	9	11	15	42
Villanova	14	16	18	14	62

GAME 4: LEHIGH 62, CORNELL 57



Lehigh	24	8	11	19	62
Cornell	18	15	12	12	57

GAME 5: LEHIGH 77, MANSFIELD 47

Official Basketball Box Score - Game Totals - Final Statistics

Mansfield vs Lehigh
11/22/17 6 p.m. at Stabler Arena - Bethlehem, Pa.

**PATRIOT
LEAGUE**

Mansfield 47 • 3-2, 1-1 PSAC

#	Player	Total			3-Ptr		Rebounds		PF	TP	A	T	Bk	Stl	Min
		FG-FGA	FG-FGA	FT-FTA	Off	Def	Tot								
24	MULLINS, Alyssa	f	3-7	1-2	3-4	2	1	3	2	10	2	3	0	2	31
25	KELLY, Brielle	f	3-14	0-1	1-4	2	1	3	4	7	1	3	0	1	27
9	GIBBONS, Erin	g	1-8	0-5	1-2	1	2	3	2	3	1	1	0	0	20
12	RUMBAUGH, Mary Kate	g	0-5	0-3	1-2	0	3	3	2	1	2	3	0	0	30
14	HATCH, McKenzie	g	3-5	1-2	2-2	1	1	2	2	9	1	2	1	2	21
01	DENOFA, Alyssa	g	0-0	0-0	2-2	0	0	0	1	2	0	0	0	0	6
04	MERRITT, Kira	g	0-2	0-0	0-0	0	3	3	1	0	0	2	0	0	12
05	SIMPSON, Hailee	g	0-1	0-0	0-0	0	0	0	0	0	0	0	0	0	2
20	TAYLOR, Melanie	g	4-7	4-5	0-0	0	2	2	2	12	1	0	0	0	19
23	LEONARD, Mia	g	0-1	0-0	0-0	1	2	3	3	0	0	1	1	1	10
33	WHITFIELD, Paige	g	1-5	1-4	0-0	0	1	1	1	3	0	0	0	0	22
Team							2	5	7				2		
Totals		15-55	7-22	10-16	9	21	30	20	47	8	16	2	6	200	
1st - FG %:		3-14	21.4%	2nd: 5-11	45.5%	3rd: 2-11	18.2%	4th: 5-19	26.3%	Game: 15-55	27.3%	Deadball	Rebounds 3		
3FG %:		1-7	14.3%	2-3	66.7%	1-5	20.0%	3-7	42.9%	7-22	31.8%	Rebounds			
FT %:		1-2	50.0%	3-4	75.0%	4-6	66.7%	2-4	50.0%	10-16	62.5%	Rebounds			

Lehigh 77 • 3-2, 0-0 PL

#	Player	Total			3-Ptr		Rebounds		PF	TP	A	T	Bk	Stl	Min
		FG-FGA	FG-FGA	FT-FTA	Off	Def	Tot								
12	Grundhoffer, Gena	f	2-8	0-1	0-0	1	2	3	3	4	0	3	2	0	18
44	Williams, Mae	f	0-4	0-3	0-0	2	0	2	3	0	1	0	0	0	17
15	Buhr, Camryn	g	4-10	0-1	7-8	6	5	11	3	15	0	0	1	1	21
20	Mann, Quinci	g	7-9	3-4	1-2	0	5	5	0	18	1	3	0	2	25
22	Hedstrom, Hannah	g	0-3	0-2	2-2	0	4	4	1	2	12	1	3	0	27
05	Devaney, Bernadette	g	2-4	1-2	0-0	0	2	2	1	5	2	2	0	0	24
13	Eripret, Meagan	g	3-5	0-1	1-2	1	4	5	1	7	0	3	1	1	14
14	Galliani, Paige	g	2-3	2-3	0-0	0	0	0	1	6	2	0	1	0	9
25	Clougherty, Mary	g	2-4	1-2	0-0	0	2	2	0	5	1	0	0	0	15
30	Benz, Cameryn	g	5-7	0-1	0-2	3	3	6	1	10	0	1	1	1	14
34	Sexe, Mariah	g	1-4	0-0	3-4	1	5	6	2	5	1	2	1	0	16
Team							2	2	4						
Totals		28-61	7-20	14-20	16	34	50	16	77	20	15	7	8	200	
1st - FG %:		9-13	69.2%	2nd: 4-15	26.7%	3rd: 8-16	50.0%	4th: 7-17	41.2%	Game: 28-61	45.9%	Deadball	Rebounds 2		
3FG %:		4-6	66.7%	1-5	20.0%	1-4	25.0%	1-5	20.0%	7-20	35.0%	Rebounds			
FT %:		4-6	66.7%	5-8	62.5%	1-2	50.0%	4-4	100.0%	14-20	70.0%	Rebounds			

Officials: Kevin Sparrock, Kelly Callahan, Laura Isabelle

Technical fouls: Mansfield-None. Lehigh-None.

Attendance: 486

Score by periods	1st	2nd	3rd	4th	Total
Mansfield	8	15	9	15	47
Lehigh	26	14	18	19	77

GAME 7: LA SALLE 69, LEHIGH 61

Official Basketball Box Score - Game Totals - Final Statistics

La Salle vs Lehigh

11/26/17 4:30 p.m. at Stabler Arena - Bethlehem, Pa.

La Salle 69 • 3-3

		Total	3-Ptr		Rebounds									
#	Player	FG-FGA	FG-FGA	FT-FTA	Off	Def	Tot	PF	TP	A	T	Bk	Stl	Min
25	MILLER, Shalina	f	5-8	0-0	0-2	3	6	9	1	10	0	3	1	0
35	NGWAFANG, Sofia	f	5-5	0-0	3-3	2	2	4	5	13	0	4	0	0
01	EDWARDS, Shaquana	g	1-3	0-1	7-8	0	7	7	2	9	2	2	0	5
15	MILLER, Adreana	g	3-8	2-4	1-1	0	1	1	5	9	1	4	0	0
21	GRIFFIN, Amy	g	9-17	2-2	4-6	1	4	5	3	24	4	2	1	0
11	KING, Deja	g	0-2	0-0	0-0	0	3	3	3	0	5	1	0	0
13	SCHIEL, Anemone	g	0-1	0-0	0-0	0	4	4	0	1	2	0	1	19
14	NICHOLLS, Michelle	g	0-0	0-0	0-0	0	0	0	0	0	2	0	0	3
22	RESE, Jeryn	g	1-2	0-0	0-0	0	0	0	1	2	0	0	0	12
32	WHITE, Jasmine	g	1-1	0-0	0-0	1	1	2	0	2	0	0	0	2
44	FREELAND, Ashanti	g	0-1	0-0	0-0	0	2	2	0	0	1	4	1	1
Team					2	3	5							
Totals		25-48	4-7	15-20	9	33	42	24	69	14	24	3	7	200
1st - FG %:		6-13	46.2%	2nd: 7-13	53.8%	3rd: 8-16	50.0%	4th: 4-6	66.7%	Game: 25-48	52.1%	Deadball		
3FG %:		0-0	0.0%	0-2	0.0%	3-4	75.0%	1-1	100.0%	4-7	57.1%	Rebounds		
FT %:		6-9	66.7%	2-2	100.0%	3-3	100.0%	4-6	66.7%	15-20	75.0%	Rebounds		

Lehigh 61 • 4-3

		Total	3-Ptr		Rebounds									
#	Player	FG-FGA	FG-FGA	FT-FTA	Off	Def	Tot	PF	TP	A	T	Bk	Stl	Min
12	Grundhoffer, Gena	f	1-10	0-2	2-2	0	0	0	1	4	0	2	0	2
44	Williams, Mae	f	0-0	0-0	0-0	2	0	2	4	0	0	1	0	0
15	Buhr, Camryn	g	3-9	1-2	3-4	1	3	4	4	10	1	3	0	1
20	Mann, Quinci	g	5-14	0-5	7-10	0	0	0	1	17	1	1	0	0
22	Hedstrom, Hannah	g	5-7	0-0	3-6	1	4	5	3	13	3	4	1	2
05	Devaney, Bernadette	g	1-4	1-3	0-0	0	0	0	0	3	3	0	0	0
13	Eripret, Meagan	g	1-2	0-0	0-0	0	1	1	0	2	0	0	0	0
14	Galliani, Paige	g	0-0	0-0	0-0	0	0	0	1	0	0	0	0	0
25	Clougherty, Mary	g	1-6	0-3	0-0	0	1	1	2	1	0	0	1	1
30	Benz, Cameryn	g	4-7	0-2	0-0	2	3	5	1	8	0	2	1	1
34	Sexe, Mariah	g	1-3	0-1	0-0	0	2	2	3	2	0	0	0	0
Team					4	1	5							
Totals		22-62	2-18	15-22	10	15	25	19	61	6	13	2	7	200
1st - FG %:		4-13	30.8%	2nd: 6-14	42.9%	3rd: 5-16	31.3%	4th: 7-19	36.8%	Game: 22-62	35.5%	Deadball		
3FG %:		1-5	20.0%	0-6	0.0%	1-3	33.3%	0-4	0.0%	2-18	11.1%	Rebounds		
FT %:		2-2	100.0%	1-3	33.3%	5-6	83.3%	7-11	63.6%	15-22	68.2%	Rebounds		

Officials: Geraldine Smith, LaSonia Baker, Natasha Camy

Technical fouls: La Salle-None. Lehigh-None.

Attendance: 544

Score by periods	1st	2nd	3rd	4th	Total
La Salle	18	26	22	13	69
Lehigh	11	13	16	21	61

GAME 9: LEHIGH 65, SACRED HEART 55



Official Basketball Box Score - Game Totals - Final Statistics
Lehigh vs Sacred Heart
 12/3/17 1pm at Pitt Center

**Lehigh 55 • 5-4**

#	Player	Total	3-Ptr		Rebounds			PF	TP	A TO Blk Stl				Min	
		FG-FA	FG-FA	FT-FTA	Off	Def	Tot			A	TO	Blk	Stl		
12	Grundhoffer, Gena	f	8-20	2-4	0-1	4	9	13	2	18	1	5	0	0	32
44	Williams, Mae	f	2-3	0-0	0-0	2	1	3	1	4	1	1	1	0	19
15	Buhr, Camryn	g	6-13	0-2	1-2	0	7	7	3	13	1	1	2	1	40
20	Mann, Quinci	g	0-5	0-3	0-0	0	1	1	1	0	5	1	0	1	31
22	Hedstrom, Hannah	g	1-3	0-0	0-2	2	4	6	4	2	3	5	0	2	20
05	Devaney, Bernadette	g	4-11	4-7	0-0	0	2	2	0	12	1	0	0	0	24
13	Eripret, Meagan	g	0-1	0-0	0-0	0	0	0	1	0	0	0	0	0	2
25	Clougherty, Mary	g	0-1	0-1	0-0	0	0	0	0	0	0	0	0	0	5
30	Benz, Cameryn	g	1-3	0-0	2-4	1	3	4	1	4	0	2	0	0	13
34	Sexe, Mariah	g	0-0	0-0	2-4	1	4	5	2	2	1	3	2	0	14
	Team					4	0	4							
	Totals		22-60	6-17	5-13	14	31	45	15	55	13	18	5	4	200

1st:	FG %:	5-15	33.3%	2nd:	5-17	29.4%	3rd:	9-17	52.9%	4th:	3-11	27.3%	Game:	22-60	36.7%	Deadball
	3FG %:	1-3	33.3%		2-6	33.3%		3-6	50.0%		0-2	0.0%		6-17	35.3%	Rebounds
	FT %:	1-3	33.3%		2-4	50.0%		0-0	0.0%		2-6	33.3%		5-13	38.5%	

Sacred Heart 65 • 3-4

#	Player	FG	FGA	3-Ptr	FT	FTA	Rebounds	PF	TP	A	TO	Blk	Stl	Min
							Off Def Tot							
33	Jenna Silletti	f	2-6	0-0	2-2		1 0 1	2	6	0	0	1	0	15
02	Tykera Carter	g	5-8	1-3	0-0		0 2 2	3	11	0	2	0	1	35
05	Erin Storck	g	5-10	3-4	2-4		1 4 5	3	15	2	0	0	1	39
21	Candice Leatherwood	g	5-10	1-3	1-2		0 4 4	3	12	2	5	0	2	28
22	Adrianne Hagood	g	0-4	0-2	0-0		0 2 2	2	0	0	0	0	0	5
10	Olivia Dabney	g	2-7	0-4	0-2		1 6 7	2	4	2	2	2	5	33
12	Allyson Murphy	g	1-1	1-1	2-2		0 2 2	1	5	3	1	0	0	15
13	Katherine Haines	g	4-14	2-2	2-3		3 6 9	3	12	1	0	2	0	26
15	Asia McCray	g	0-1	0-0	0-0		0 0 0	1	0	0	0	0	0	1
32	Abigail Kangudie	g	0-1	0-0	0-0		0 1 1	0	0	0	2	0	0	3
	Team						4 1 5							
Totals			24-62	8-19	9-15		10 28 38	20	65	10	12	5	9	200

1st - FG %:	7-15	46.7%	2nd: 7-16	43.8%	3rd: 6-18	33.3%	4th: 4-13	30.8%	Game: 24-62	38.7%	Deadball
3FG %:	2-5	40.0%	3-6	50.0%	1-5	20.0%	2-3	66.7%	8-19	42.1%	Rebounds
FT %:	3-4	75.0%	4-7	57.1%	1-2	50.0%	1-2	50.0%	9-15	60.0%	

Officials: Pastor Torres, Scott Berkins, Kerri Lang
 Technical fouls: Lehigh-None. Sacred Heart-None.
 Attendance: 259

Score by periods	1st	2nd	3rd	4th	Total
Lehigh	12	14	21	8	55
Sacred Heart	19	21	14	11	65

GAME 10: LEHIGH 64, NJIT 50



Official Basketball Box Score - Game Totals - Final Statistics
NJIT vs Lehigh
 12/6/17 11 a.m. at Stabler Arena - Bethlehem, Pa.

**NJIT 50 • 0-9**

#	Player		Total	3-Ptr	Rebounds											
			FG	FGA	FT	FTA	Off	Def	TP	PF	TP	A	TO	Blk	Stl	Min
12	LEWIS, Taj	f	6-11	0-0	0-0	4	4	8	3	12	0	0	2	2	29	
01	STOLL, Elyn		2-11	0-4	2-3	1	1	2	3	6	1	3	0	0	35	
14	TRUEHEART, Amarri	g	0-6	0-0	3-4	1	0	1	0	3	1	1	0	2	24	
22	TORRES, Tatianna		5-12	1-4	2-2	0	2	2	2	13	0	2	0	2	31	
25	ALLEN, Dez	g	5-10	1-1	0-3	0	4	4	3	11	0	2	1	1	34	
00	MORGAN, Amber		1-4	0-0	0-0	0	0	0	2	2	0	1	0	0	17	
10	LIBBY, Jillian		0-1	0-0	0-0	2	3	5	2	0	0	0	0	0	15	
11	IRELAND, Jordan		1-3	0-2	1-1	0	2	2	0	3	0	1	0	0	11	
21	MARTINEZ-ORTIZ, L.		0-0	0-0	0-0	0	0	0	1	0	1	0	0	0	4	
	Team					2	1	3								
	Totals		20-58	2-11	8-13	10	17	27	16	50	3	11	3	7	200	
1st - FG %: 7-18 38.9% 2nd: 4-15 26.7% 3rd: 5-11 45.5% 4th: 4-14 28.6% Game: 20-58 34.5% Deadball																
3FG %: 1-3 33.3% 1-2 50.0% 0-2 0.0% 0-4 0.0% 2-11 18.2% Rebounds																
FT %: 1-2 50.0% 6-7 85.7% 0-2 0.0% 1-2 50.0% 8-13 61.5% 1																

Lehigh 64 • 6-4

#	Player	Total	3-Ptr	Rebounds			PF	TP	A	TO	Blk	Stl	Min		
		FG-FGA	FG-FGA	FT-FTA	Off	Def								Total	
12	Grundhoffer, Gena	f	5-12	0-2	2-2	0	6	6	1	12	0	1	0	25	
44	Williams, Mae	f	1-4	0-0	0-0	2	5	7	2	2	3	1	0	26	
15	Buhr, Camryn	g	3-5	0-0	1-3	2	4	6	2	7	3	2	0	29	
20	Mann, Quinci	g	6-11	1-6	2-2	0	4	4	2	15	2	3	1	31	
22	Hedstrom, Hannah	g	2-3	0-0	0-0	0	2	2	2	4	4	5	1	30	
05	Devaney, Bernadette	g	2-5	1-3	3-4	0	0	0	2	8	2	2	0	18	
13	Eripret, Meagan	g	2-2	0-0	0-0	0	1	1	0	4	0	0	1	8	
14	Galliani, Paige	g	0-2	0-2	0-2	1	0	1	0	0	0	1	0	4	
25	Clougherty, Mary	g	1-2	1-1	0-0	1	0	1	1	3	0	0	0	8	
30	Benz, Cameryn	g	1-3	0-1	0-0	1	4	5	1	2	0	1	2	11	
34	Sexe, Mariah	g	2-3	0-0	3-5	3	2	5	1	7	1	1	0	10	
	Team					3	4	7							
Totals			25-52	3-17	11-18	13	32	45	14	64	15	17	6	4	200
1st - FG %: 7-13 53.8% 2nd: 5-12 41.7% 3rd: 7-13 53.8% 4th: 6-14 42.9% Game: 25-52 48.1% Deadball															
3FG %: 0-4 0.0% 2-5 40.0% 0-3 0.0% 1-5 20.0% 3-17 17.6% Rebounds															
FT %: 0-0 0.0% 7-11 63.6% 4-5 80.0% 0-2 0.0% 11-18 61.1% 4															

Officials: Gary Schimel, Donald Cumiskey, Latifa Boyce
 Technical fouls: NJIT-None. Lehigh-None.
 Attendance: 4009

Score by periods	1st	2nd	3rd	4th	Total
NJIT	16	15	10	9	50
Lehigh	14	19	18	13	64